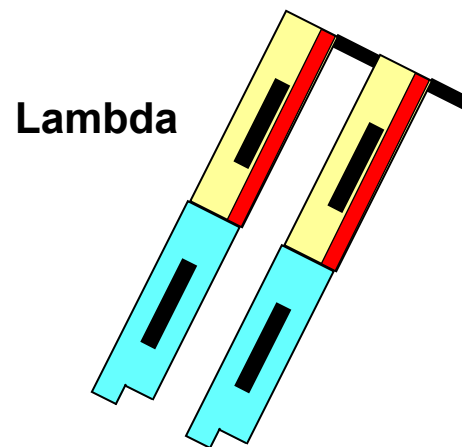
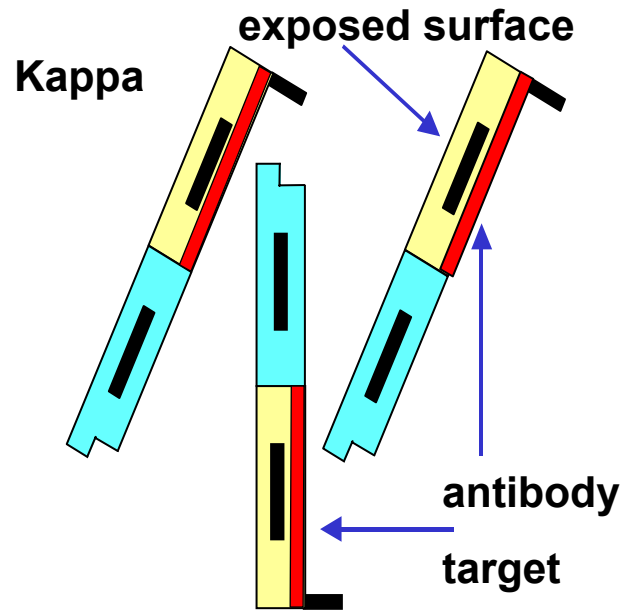
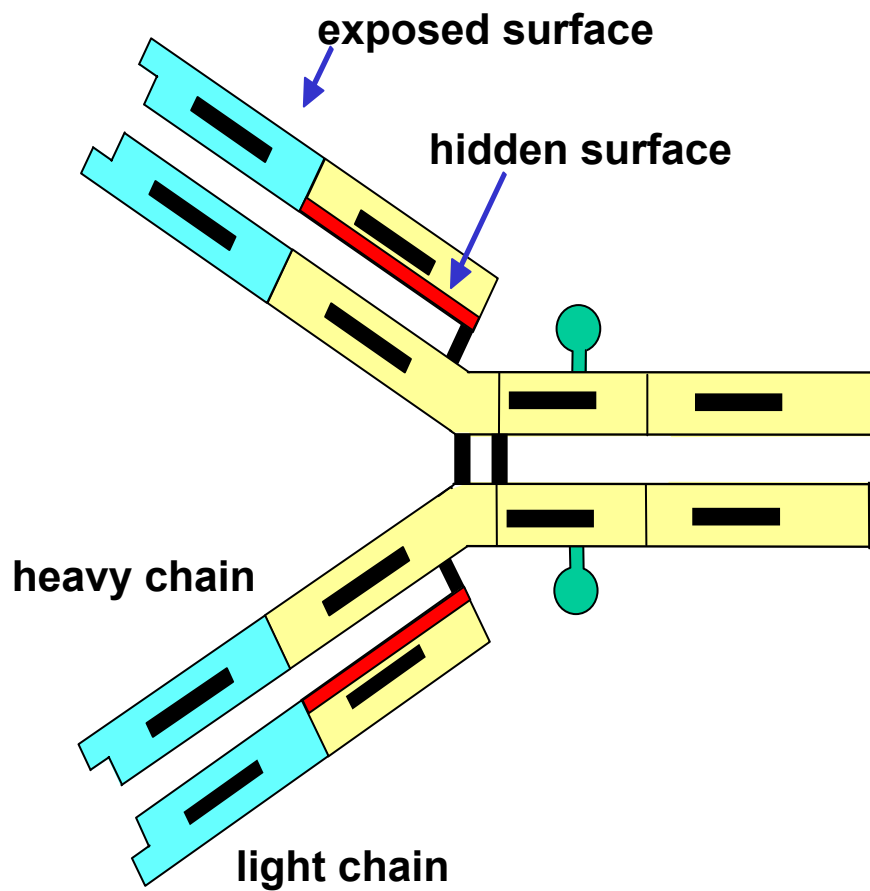
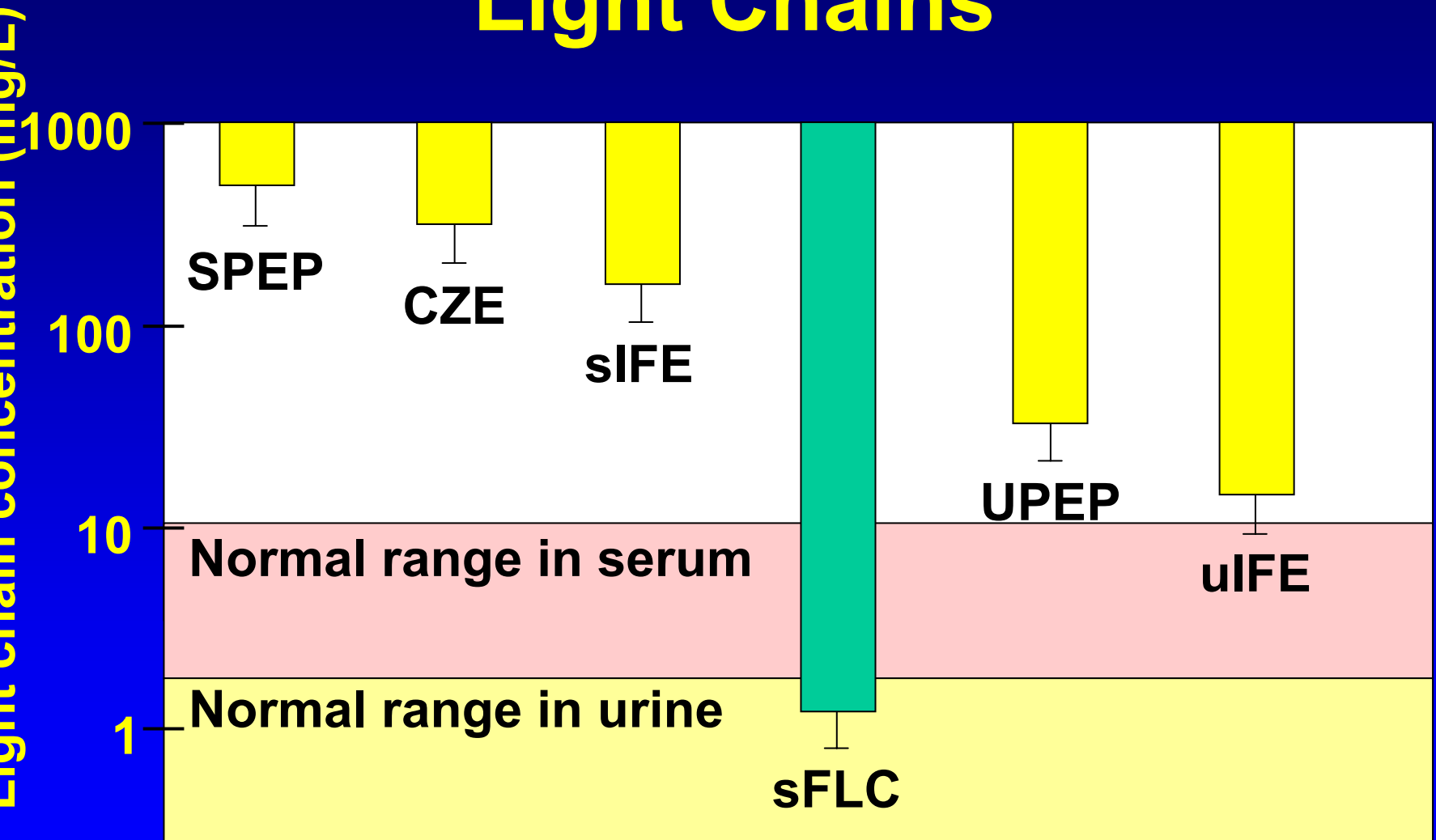


Serum Free Light Chain Measurement: Recent Developments

Graham Mead
(University of Birmingham
and The Binding Site)



Sensitivity of Assays for Light Chains

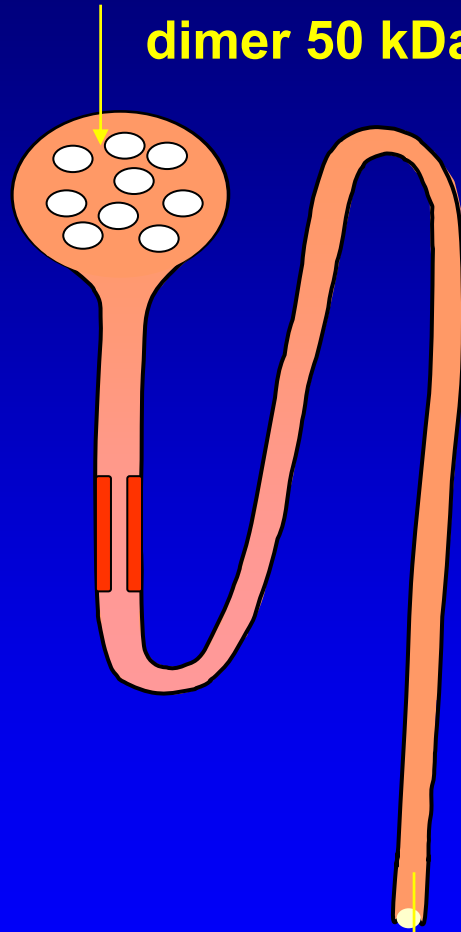


FLC - monomer 25 kDa

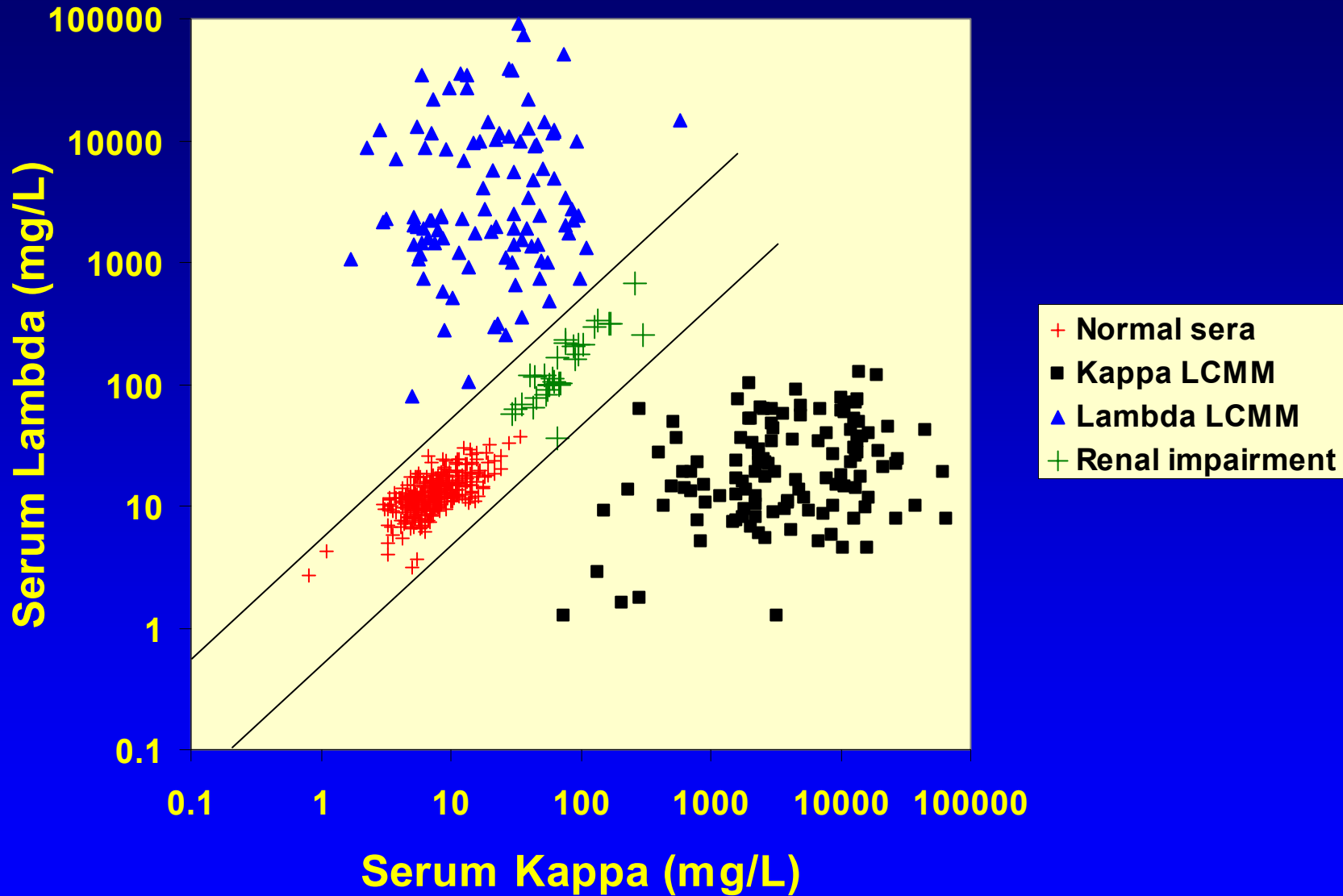
dimer 50 kDa

**Glomerulus
40 kDa
pores**

**10-30g/day
reabsorption**



urine



AL Amyloidosis

> 25 Articles

> 60 Abstracts

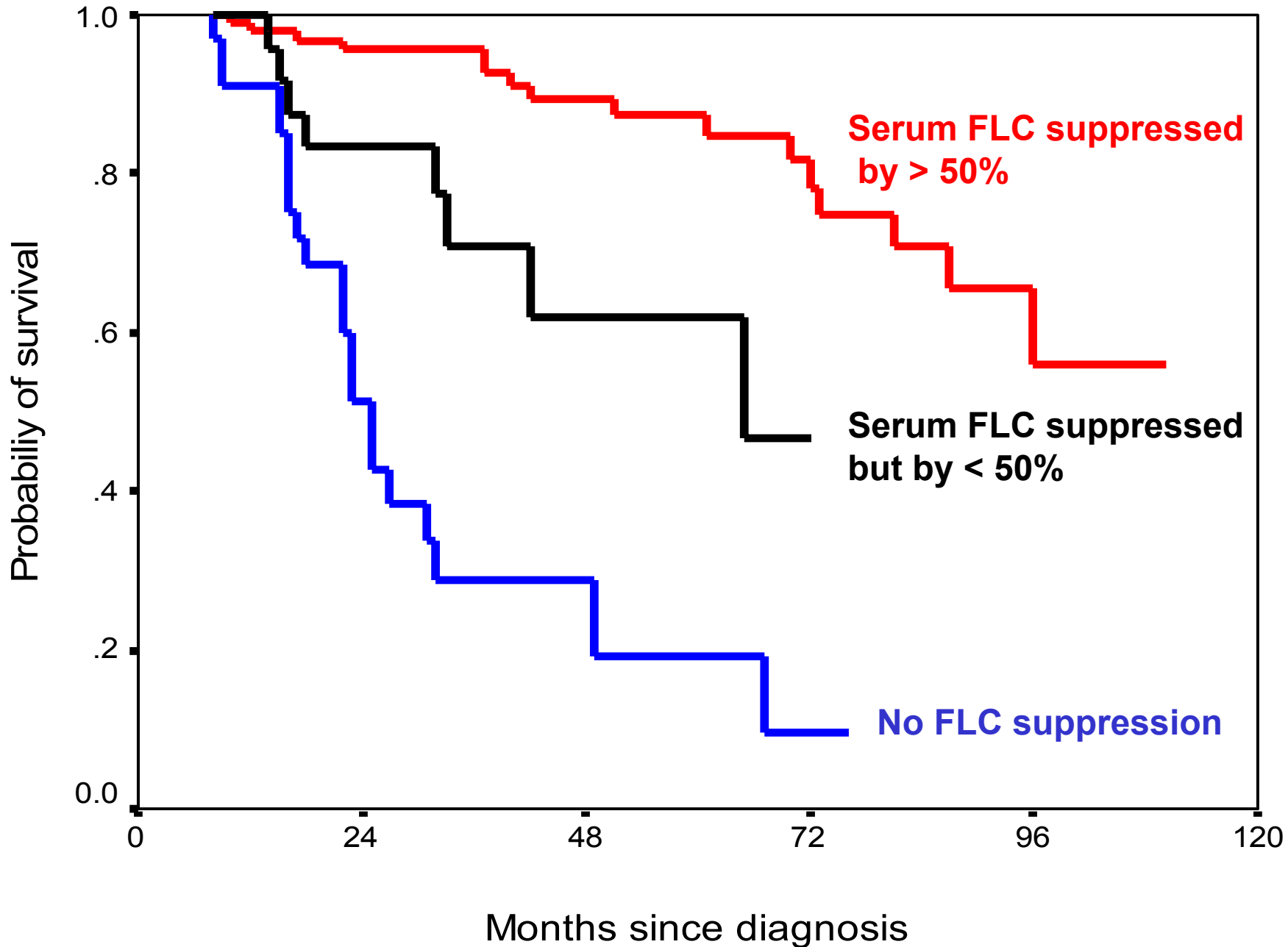
**Guidelines on the diagnosis
and management of AL
amyloidosis.**

British Journal of Haematology

2004; **125** (6), 681-700.

Gertz, M.A. *et al.* (2005). Consensus opinion from the 10th International Symposium on Amyloid and Amyloidosis.

American Journal of Hematology 79, 319-328.



**Sanchorawala *et al* Bone
Marrow Transplantation.
2005; 36: 597-600.**

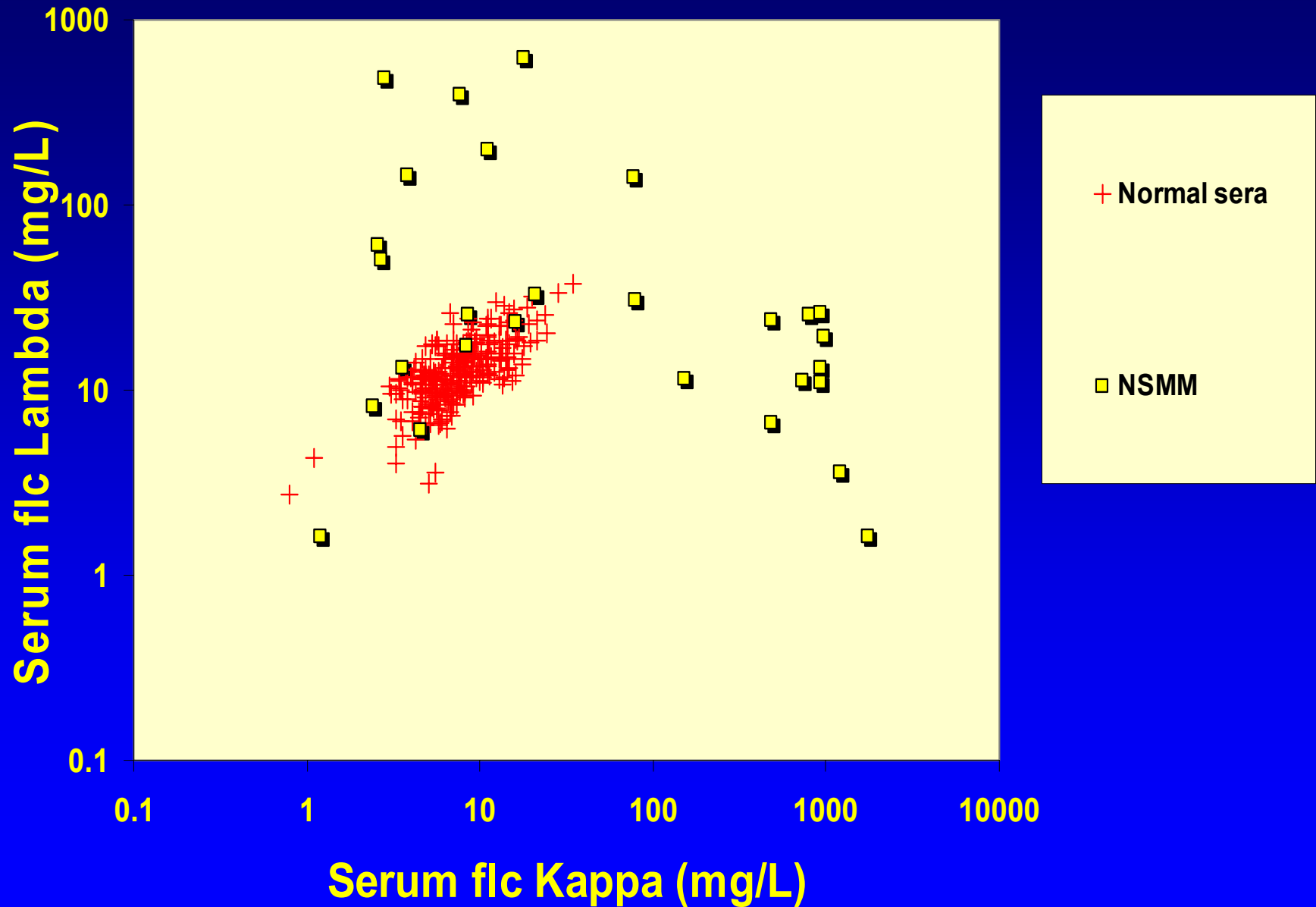
>90% reduction in FLC required for improved
prognosis

**Dispenzieri *et al* Blood. 2006;
107: 3378-3383.**

% reduction did not predict survival, absolute level of FLC did.

Nonsecretory multiple myeloma

Blood 2001; 97: 2900-2902



**Light chain only multiple
myeloma
(Bence Jones myeloma)**

International uniform response criteria for Multiple Myeloma

Durie, B.G. *et al.* Leukemia (2006):

- “Incorporation of response criteria for the serum FLC assay to enable assessment of response in patients with non- or oligo-secretory disease”
- Stringent CR (sCR) requiring normal FLC (in addition to normal bone marrow and negative immunofixation)

Screening for lymphoproliferative disorders

Bakshi, N.A. *et al* (2005). *Am J Clin Pathol* 124, 214-218. *9/1003 extra confirmed disorders*

Abadie, J.M., and Bankson, D.D. (2006). *Annals of Clinical & Laboratory Science* 36, 157-162. *20/312 extra disorders*

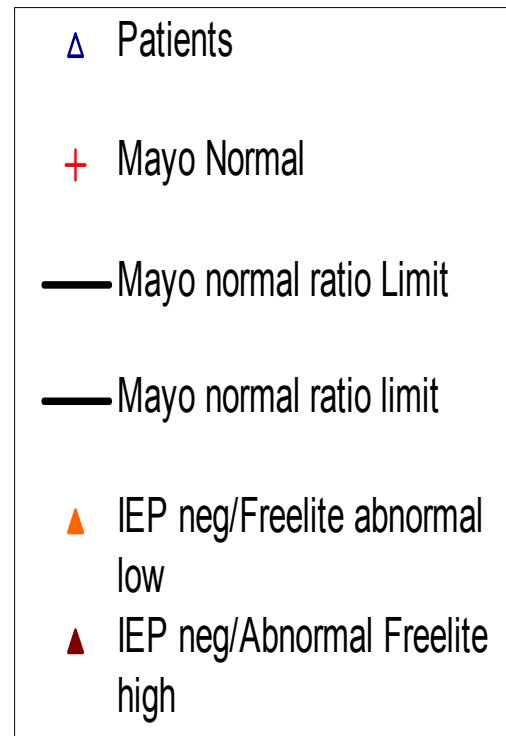
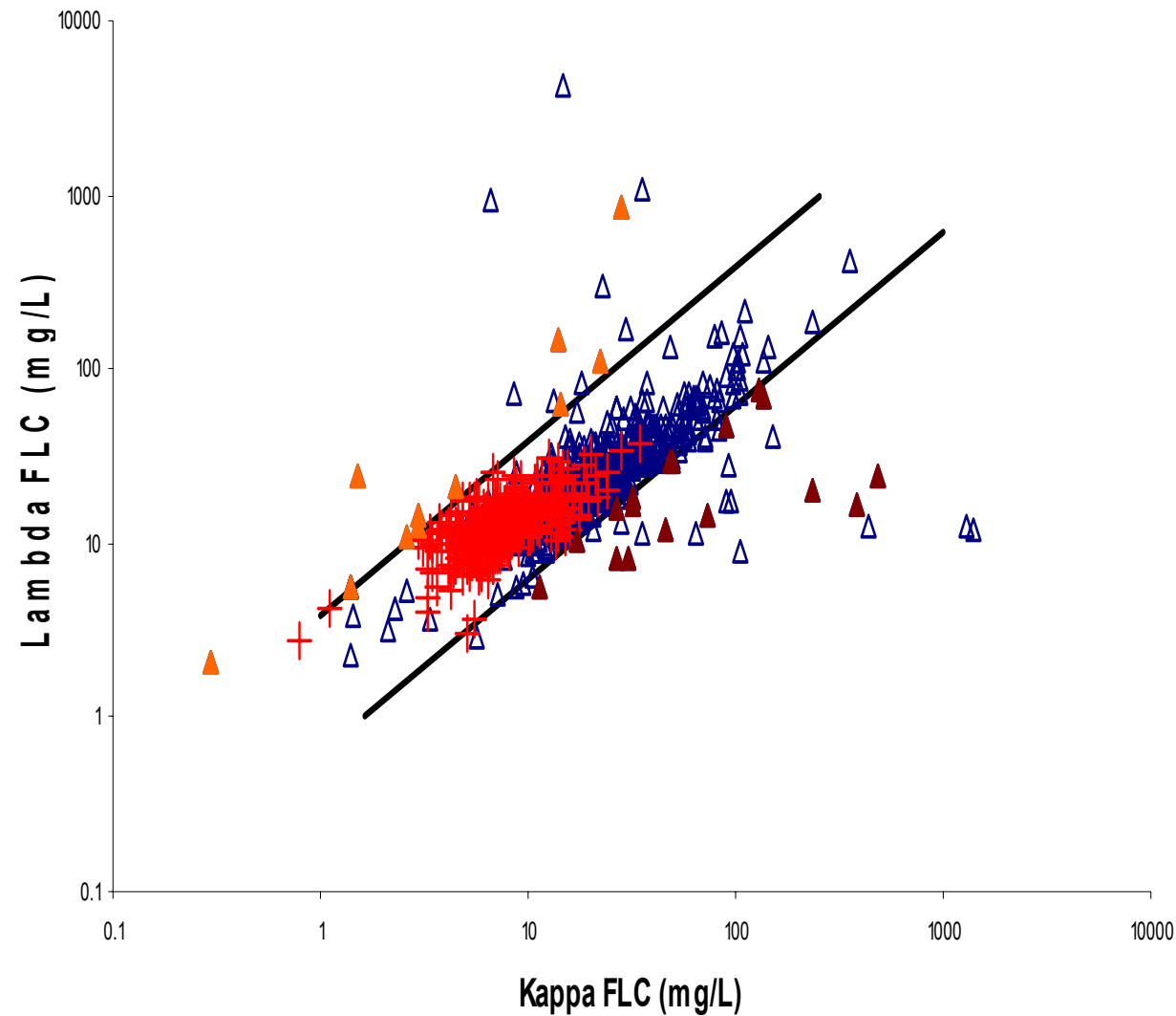
Hill, P.G. *et al* (2006). *Clin Chem.* 52, 1-6.
No “significant pathology” missed if urine tests replaced by serum (370/923)

Katzmann J.A. *et al* (2006). *Mayo Clin Proc.* 81, 1575-8.

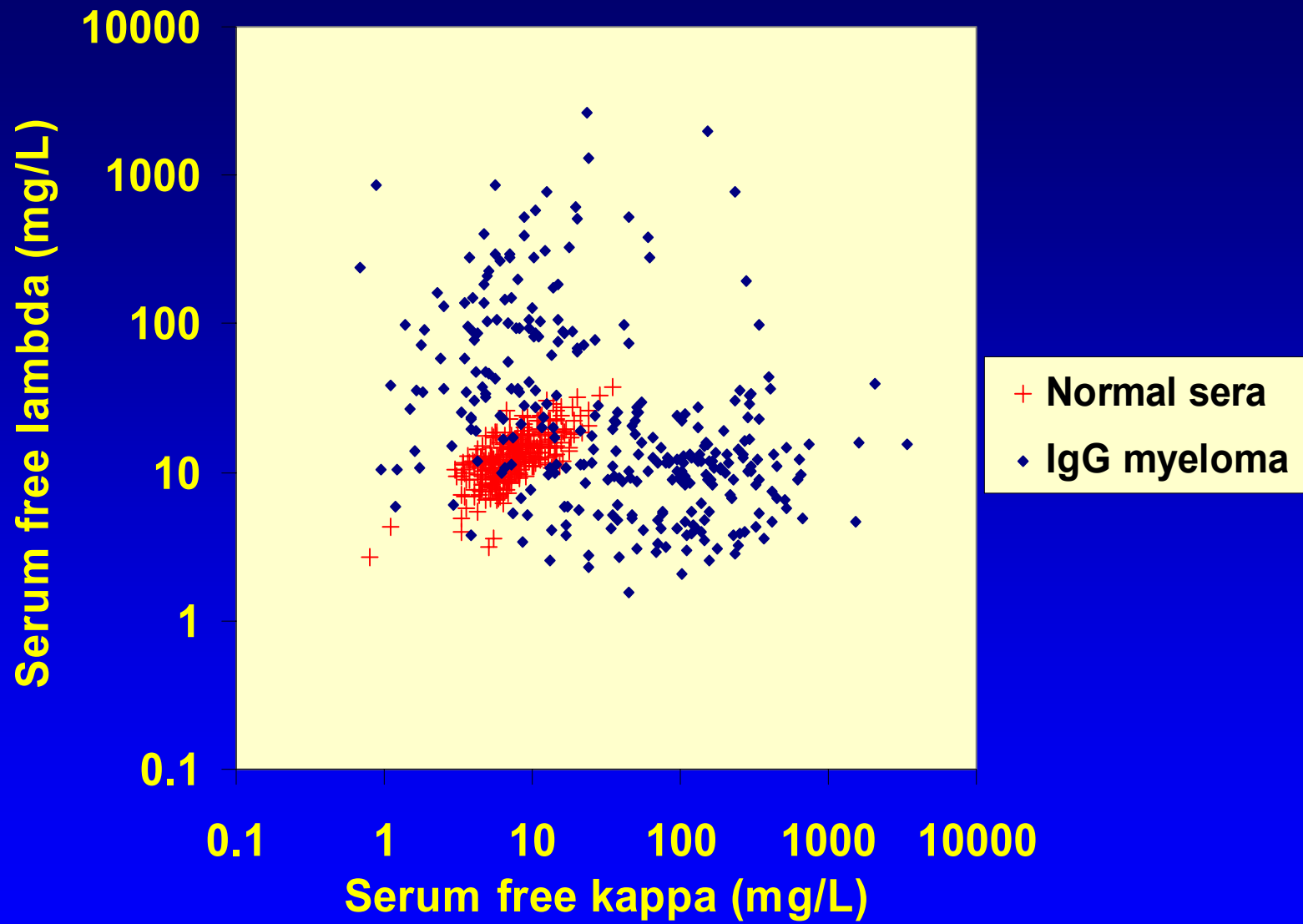
Elimination of the need for urine diagnostically

Laboratory test	No. abnormal
-----------------	--------------

Urine IFE	428
Serum IFE	400
Serum PE	346
Serum FLC κ/λ ratio	367
Serum IFE or FLC ratio	426

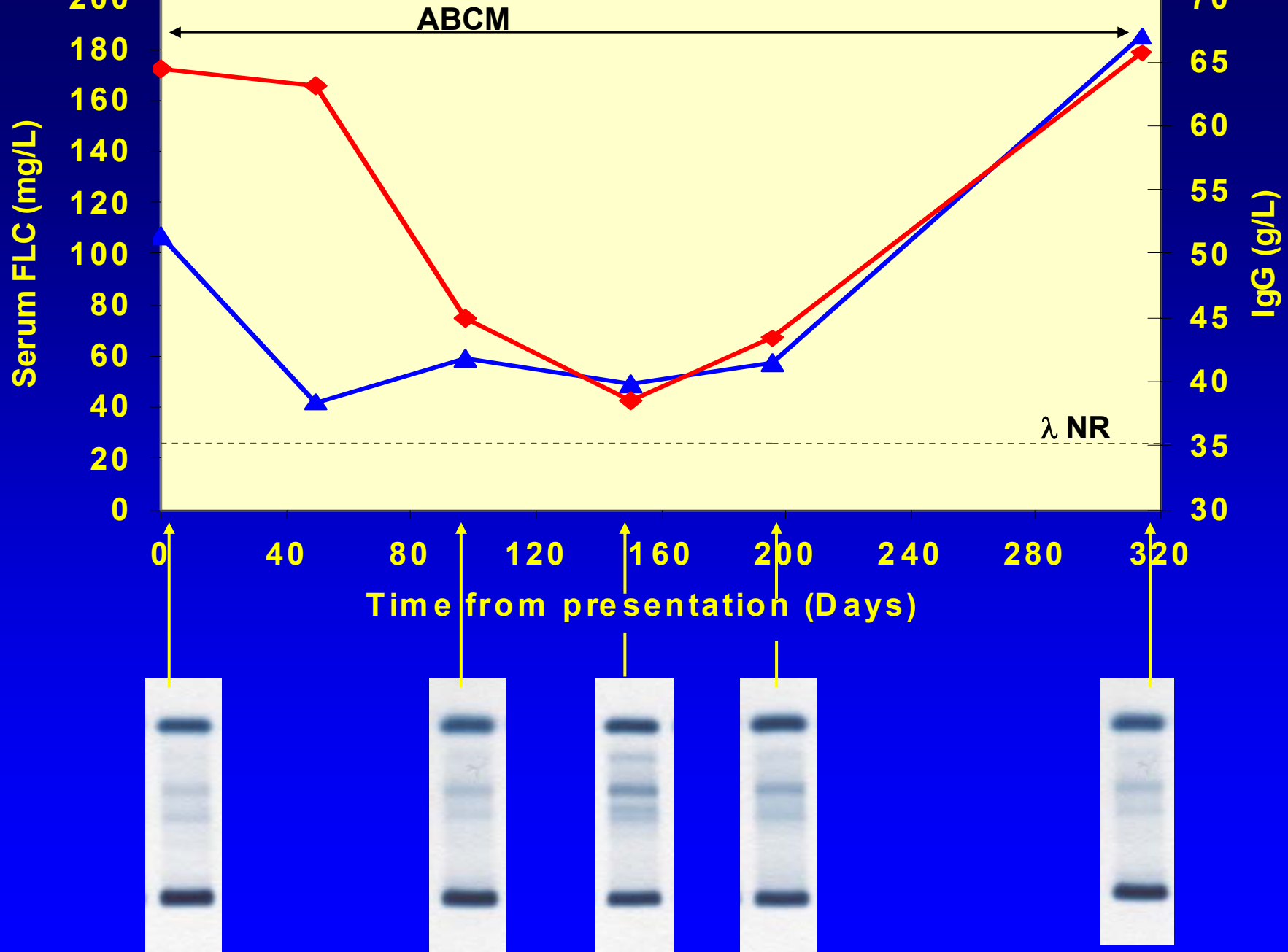


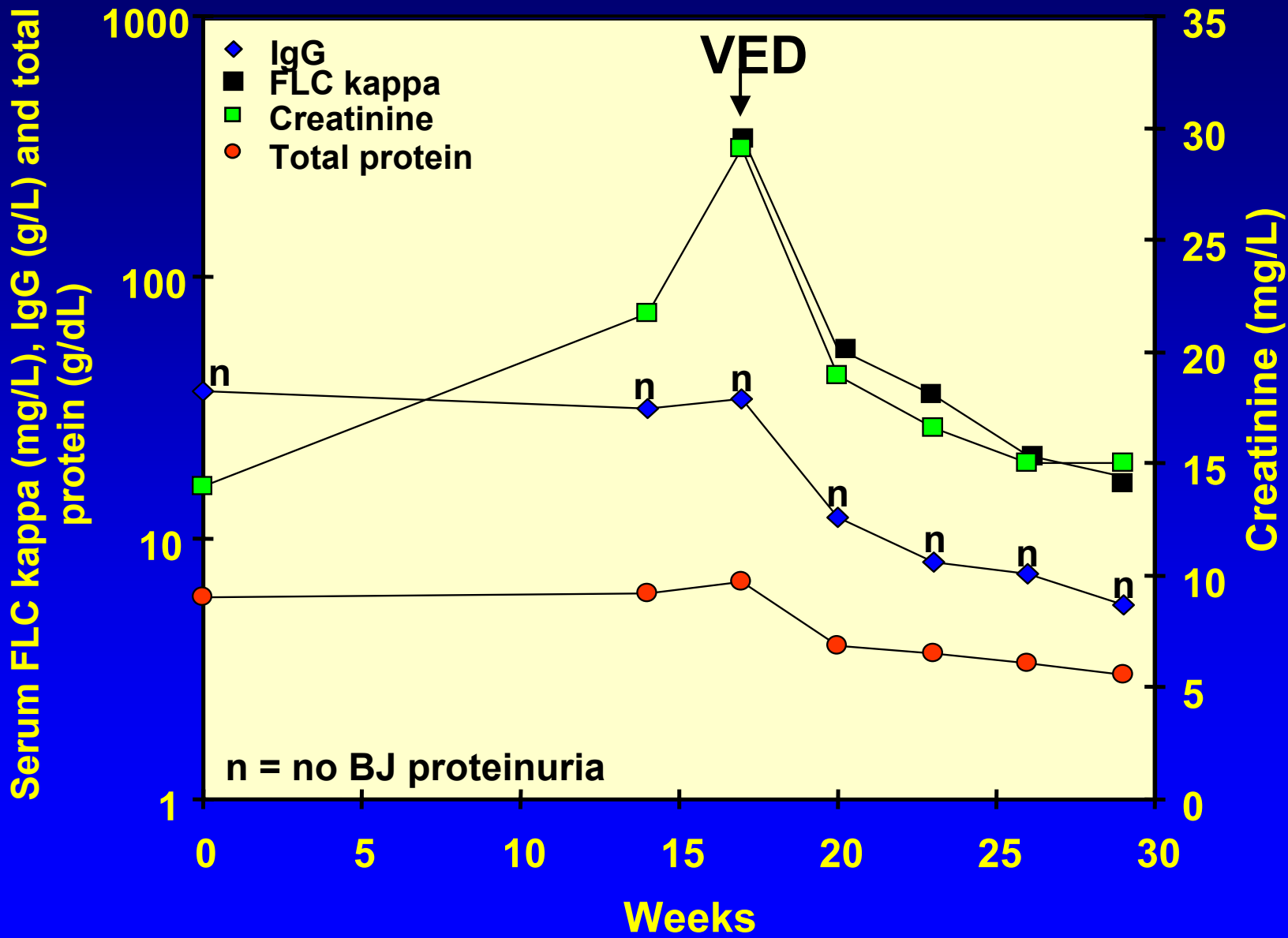
Intact immunoglobulin multiple myeloma

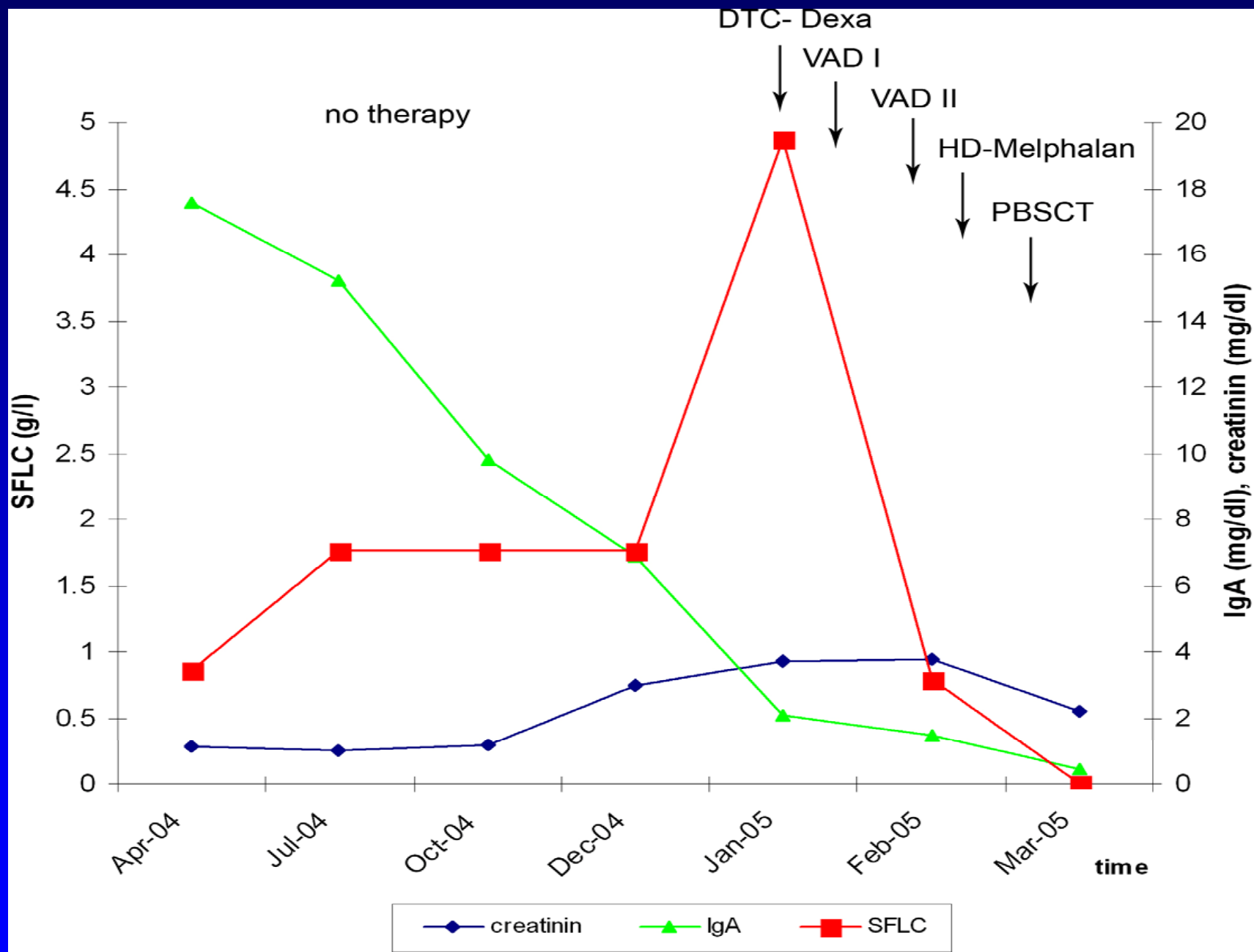


Addition of FLC assays for monitoring intact immunoglobulin myeloma

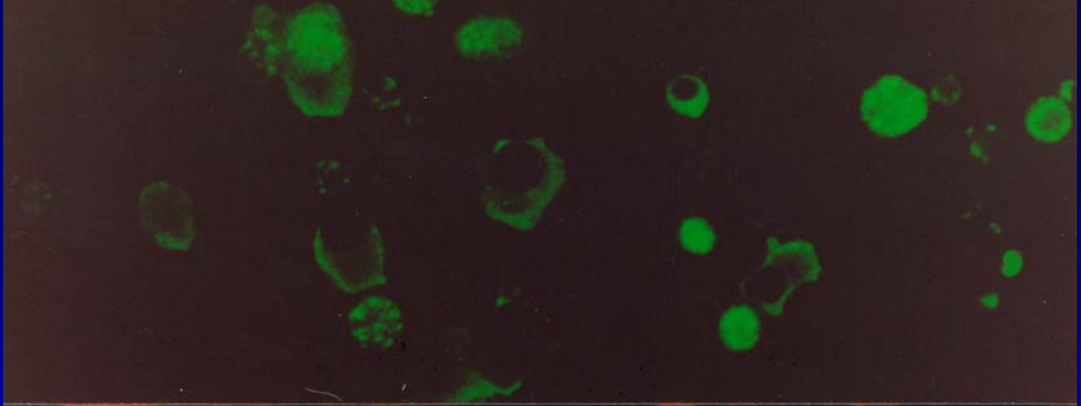
- Fast response markers**
- Forewarning of renal impairment**
- Detecting light chain “escape”**
- Prognostic at presentation?**



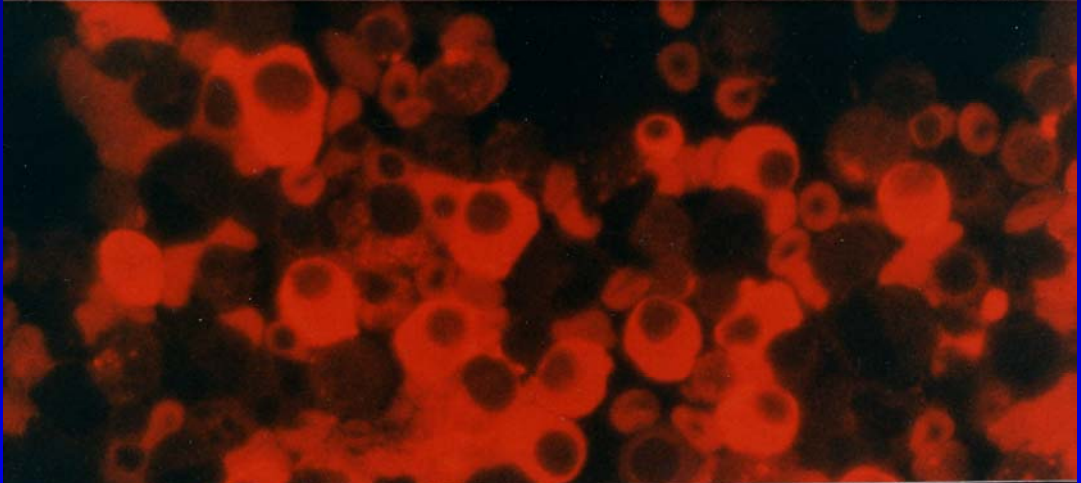




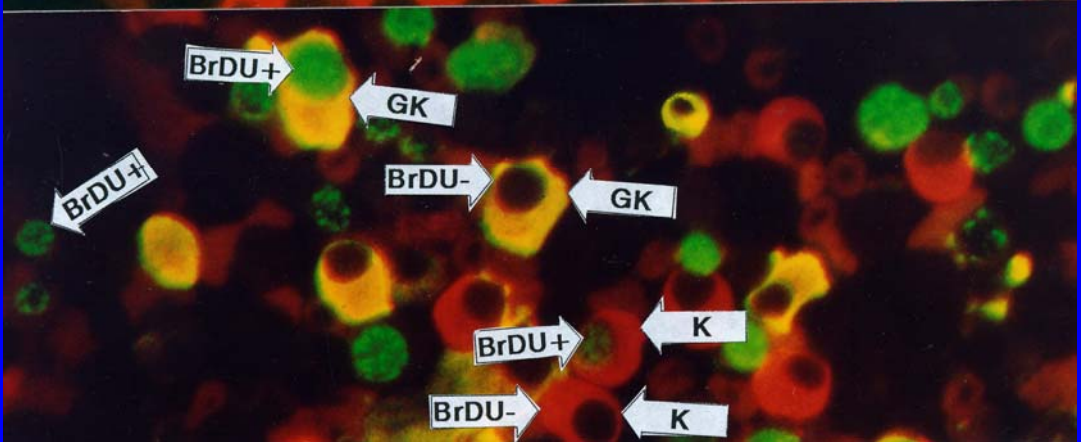
Cytoplasmic γ FITC
Nuclear BrDU



Cytoplasmic κ TRITC



Double exposure.
cyGK cells yellow.
cyKappa only cells red.
Nuclei of cells in cycle
labelled with BrDU are
green.



- Kyrtsolis M-C et al BJH 2007; **137**: 240-243. *Lower 5-year survival with abnormal ratio (n=94)*
- van Rhee et al Blood 2007; **Prepublished online**. *Worse 24 month OS/EFS if FLC >750mg/L (n=301)*

MGUS

**(Monoclonal Gammopathy of
Undetermined Significance)**

Risk stratification model incorporating all 3 predictive factors

Risk Group	No. patients	Relative risk, 95% CI	20 year risk of progression , %	20 year risk accounting for death. %
Low risk (serum M protein < 15g/L, IgG subtype, normal FLC ratio 0.26-1.65)	449	1	5	2
Low-intermediate risk (any 1 factor abnormal)	420	5.4	21	10
High-intermediate risk (any 2 factors abnormal)	226	10.1	37	18
High risk (all 3 factors abnormal)	53	20.8	58	27

Acute renal failure with multiple myeloma

Patient 1. IgG κ and FLC kappa

