

---

# Velcade v ČR rok 2011

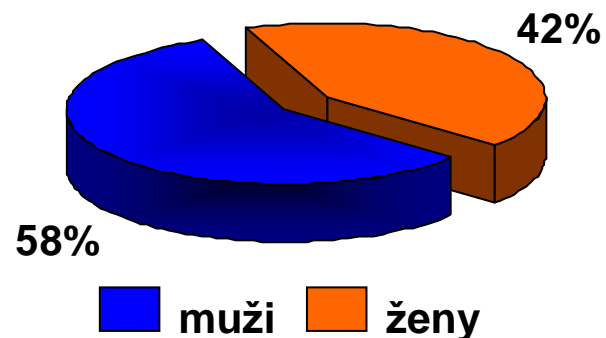
## Statistická analýza 256 pacientů

V období 1. 1. 2010 - 31. 12. 2010 zahájena léčba,  
ukončena k 30. 6. 2011.

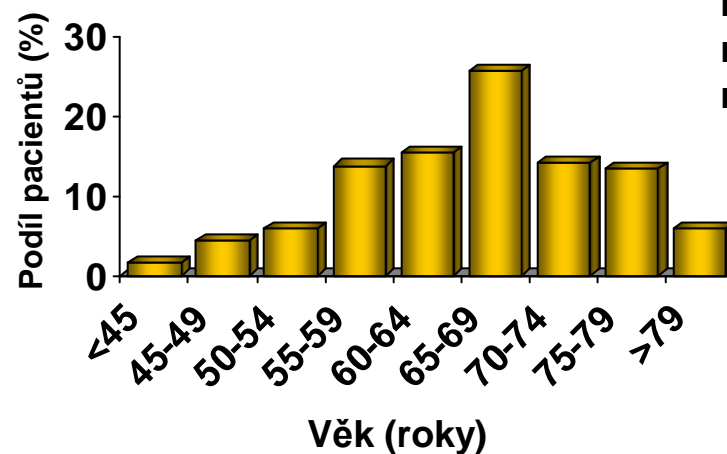
MUDr. Evžen Gregora za CMG  
Mikulášský seminář  
25. 11. 2011, Brno

# Základní charakteristika souboru

## Pohlaví

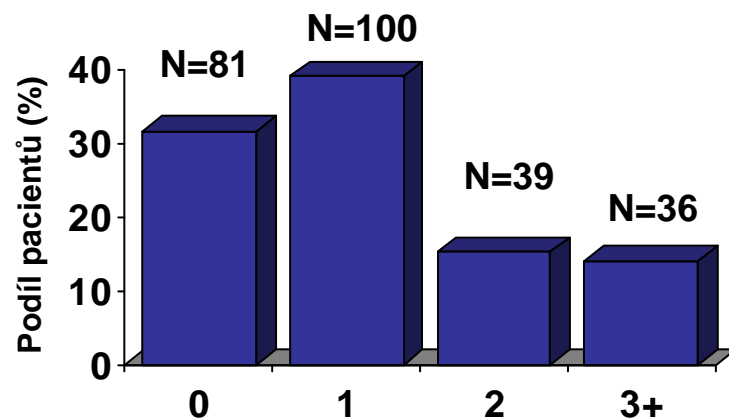


## Věk

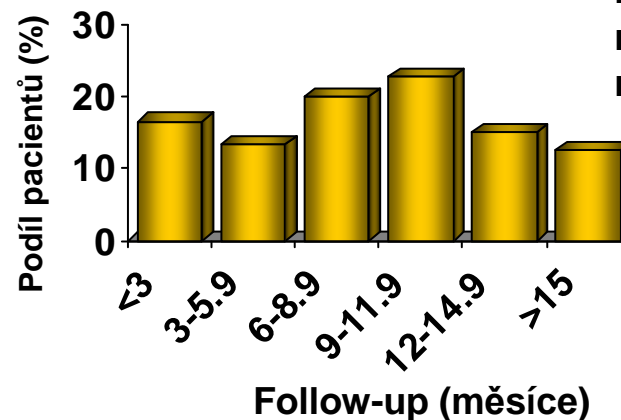


<b>N</b>	254
<b>mean (SD)</b>	66.2 (9.6)
<b>median</b>	67.4
<b>min-max</b>	34.0-86.8

## Počet předchozích linií



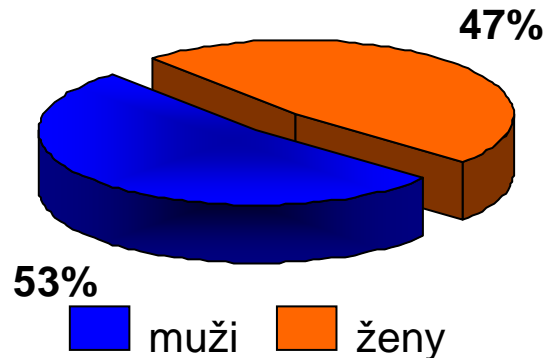
## Follow-up



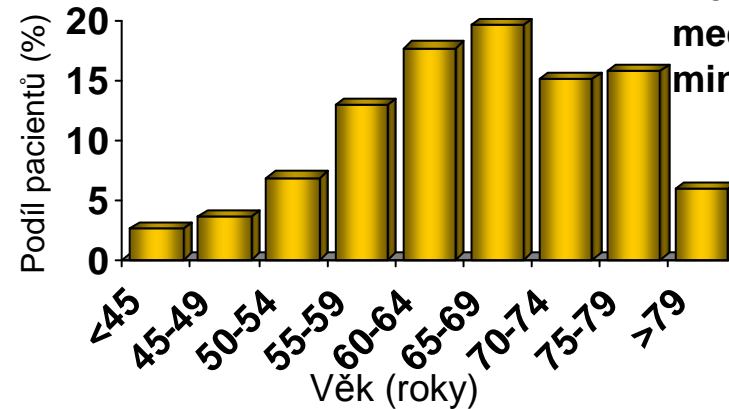
<b>N</b>	255
<b>mean (SD)</b>	8.9 (5.0)
<b>median</b>	9.0
<b>min-max</b>	0.1-20.4

# Základní charakteristika souboru

## Pohlaví

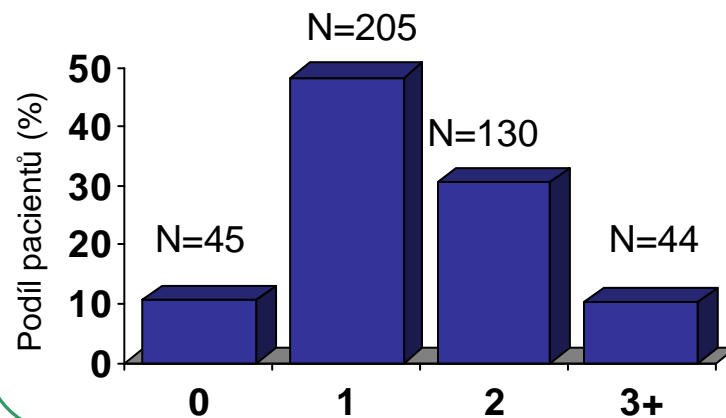


## Věk

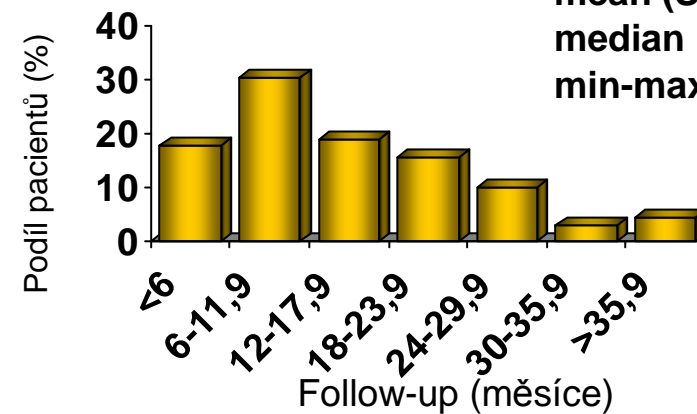


<b>N</b>	424
<b>mean (SD)</b>	66,2 (9,7)
<b>median</b>	67,0
<b>min-max</b>	34,1-86,5

## Počet předchozích linií



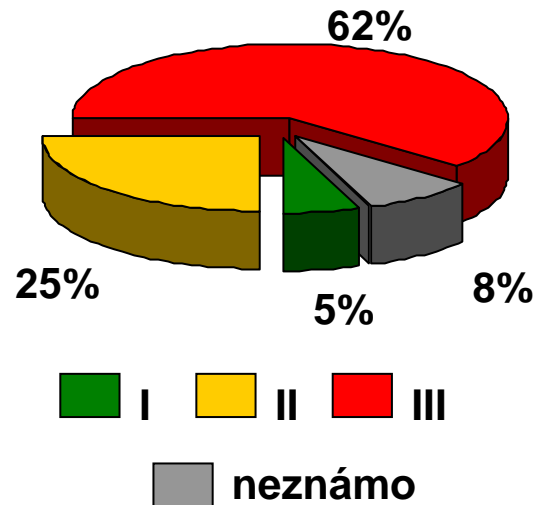
## Follow-up



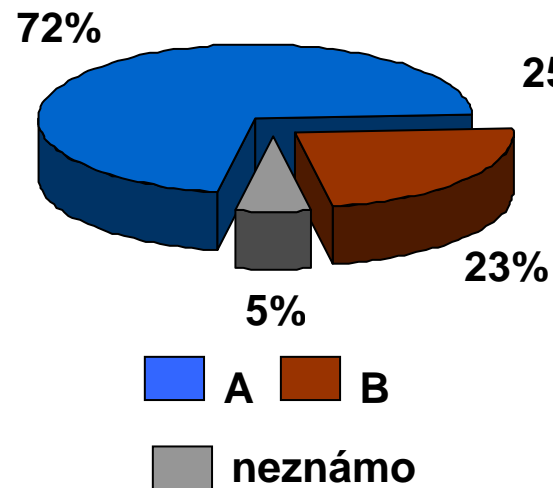
<b>N</b>	413
<b>mean (SD)</b>	14,8 (10,9)
<b>median</b>	12,4
<b>min-max</b>	0,1-60,8

# Základní charakteristika souboru (zahájení aktuální léčby)

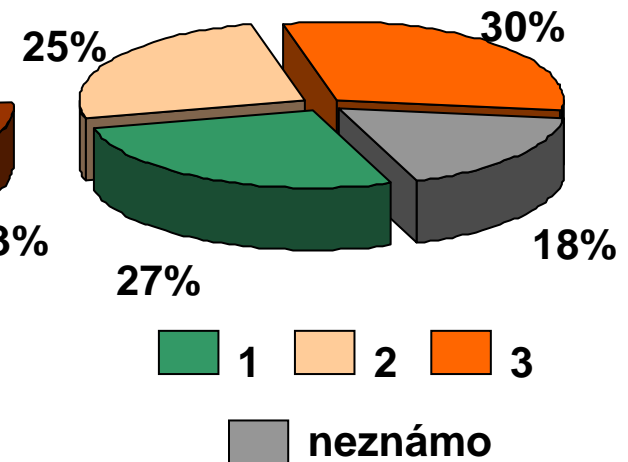
## Stádium D-S



## Stádium A-B

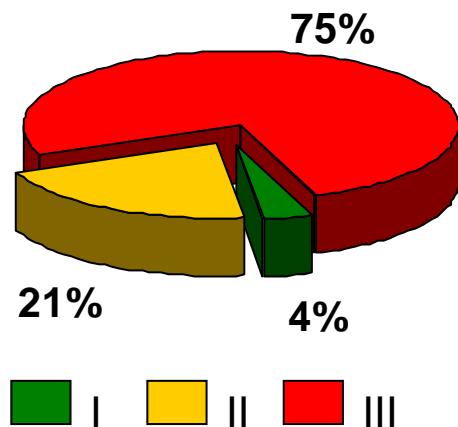


## Stádium ISS

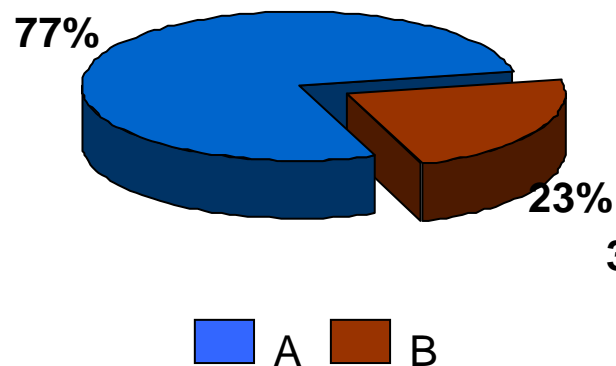


## Základní charakteristika souboru (zahájení aktuální léčby)

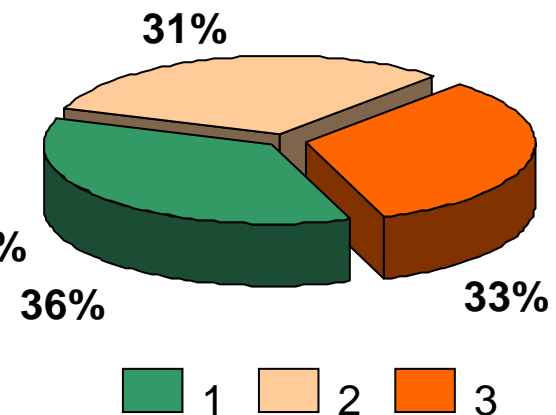
Stádium D-S



Stádium A-B

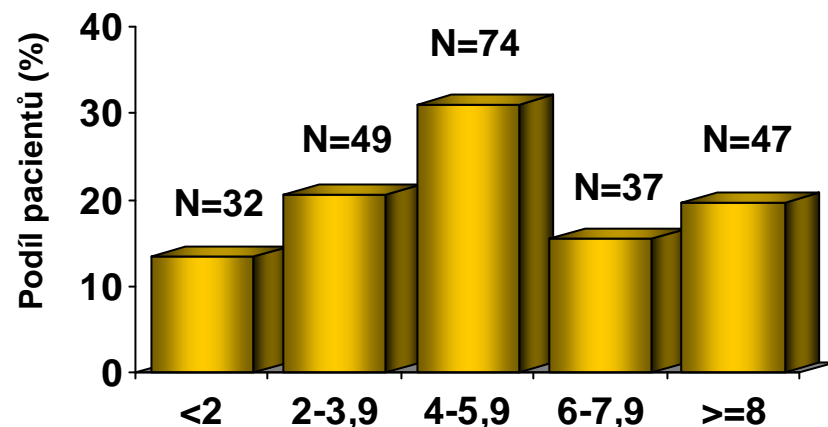


Stádium ISS



# Průběh léčby

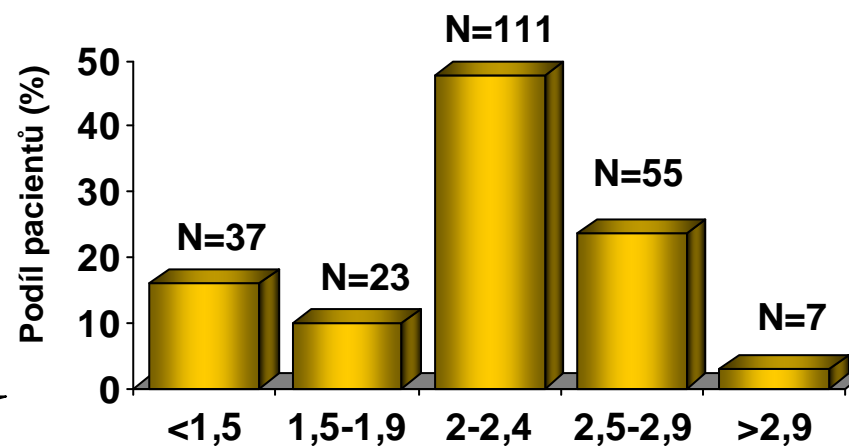
## Počet cyklů



## Počet cyklů

N	239
mean (SD)	4.6 (2.5)
median	4.0
min-max	0.5-13.0

## Průměrná denní dávka

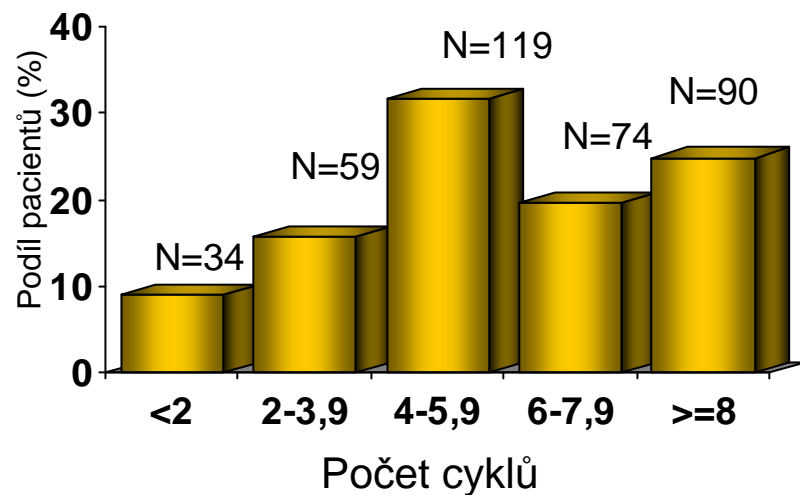


## Dávka (mg)

N	233
mean (SD)	2.4 (2.2) mg
median	2.3 mg
min-max	1.2-25.0 mg

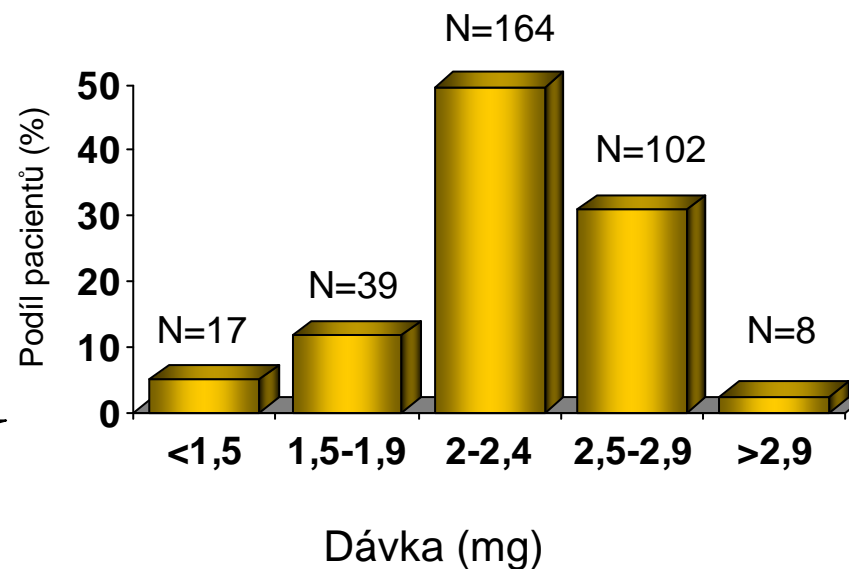
# Průběh léčby

## Počet cyklů



<b>N</b>	376
<b>mean (SD)</b>	5,1 (2,3)
<b>median</b>	5,0
<b>min-max</b>	0,5-10,0

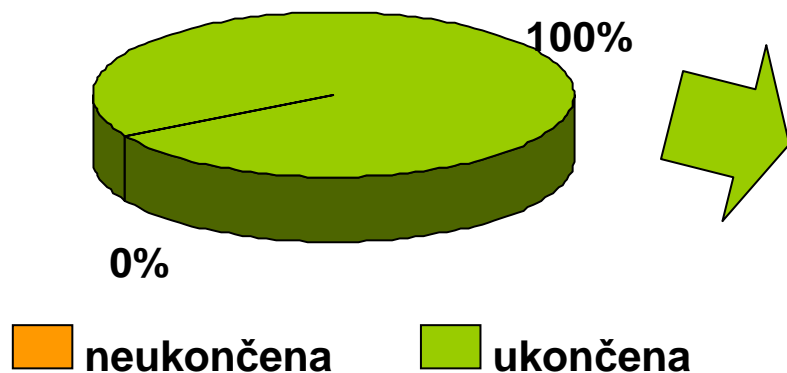
## Průměrná dávka



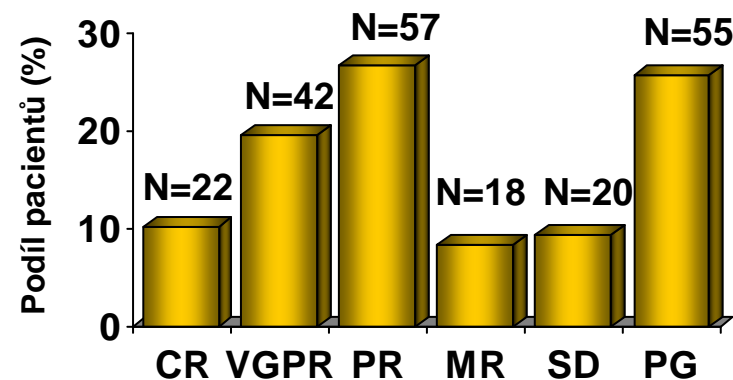
<b>N</b>	330
<b>mean (SD)</b>	2,3 (0,6) mg
<b>median</b>	2,3 mg
<b>min-max</b>	0,6-9,2 mg

# Průběh léčby

## Léčba



## Léčebná odpověď



### Léčebná odpověď (N=214)

CR	22 (10.3%)
VGPR	42 (19.6%)
PR	57 (26.6%)
MR	18 (8.4%)
SD	20 (9.3%)
PG	55 (25.7%)

ORR 121 (56.5%)

CBR 139 (65.0%)

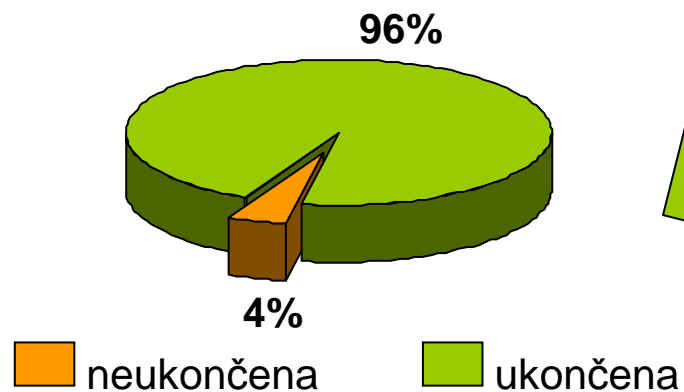
ORR = léčebná odpověď PR a lepší

CBR = léčebná odpověď MR a lepší



# Průběh léčby

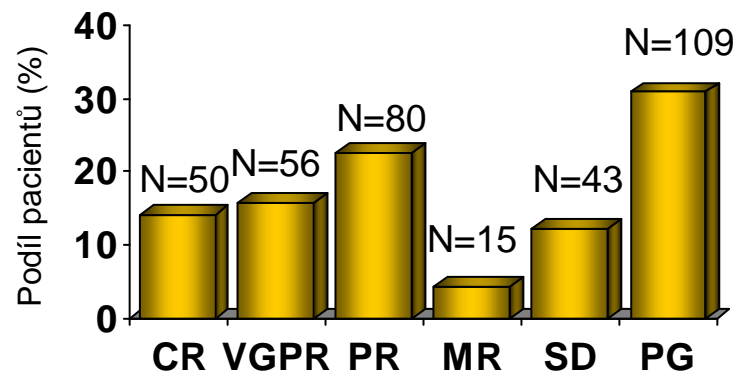
## Léčba



## Léčebná odpověď (N=353)

CR	50 (14,2%)
VGPR	56 (15,9%)
PR	80 (22,7%)
MR	15 (4,2%)
SD	43 (12,2%)
PG	109 (30,9%)

## Léčebná odpověď



ORR 186 (52,7%)

CBR 201 (56,9%)

ORR = léčebná odpověď PR a lepší

CBR = léčebná odpověď MR a lepší

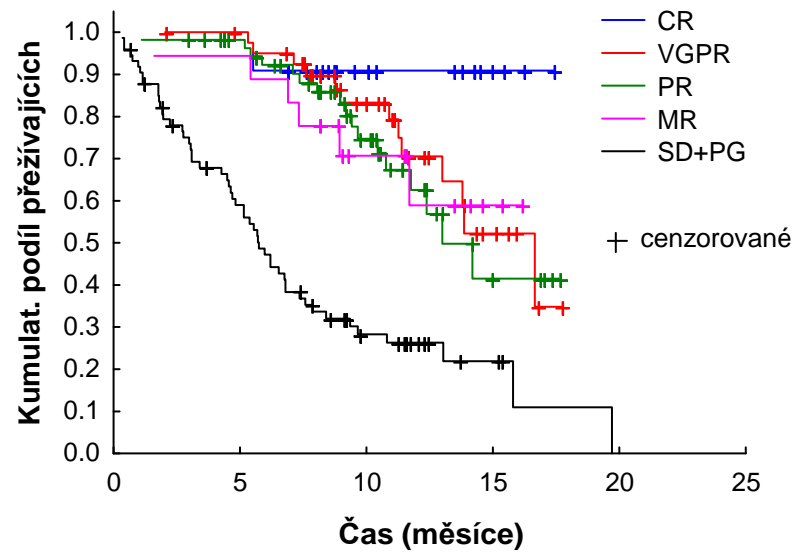
# Základní analýza



	<b>CR</b>	<b>VGPR</b>	<b>PR</b>	<b>ORR</b>	<b>MR</b>	<b>SD+PG</b>
<b>Pacienti</b>	N=22	N=42	N=57	N=121	N=18	N=75
<b>Počet cyklů</b>	N=22	N=41	N=56	N=119	N=16	N=70
<b>průměr (SD)</b>	6.2 (1.8)	5.6 (2.4)	5.4 (2.1)	5.6 (2.2)	4.9 (1.8)	3.6 (2.4)
<b>medián</b>	6.5	5.0	5.0	5.0	5.0	3.5
<b>min-max</b>	4.0-9.0	2.0-13.0	1.0-8.0	1.0-13.0	1.0-7.0	0.5-13.0
<b>Průměrná dávka</b>	N=22	N=40	N=55	N=117	N=15	N=68
<b>průměr (SD)</b>	2.0 (0.5)	2.2 (0.4)	2.3 (1.3)	2.2 (0.9)	2.1 (0.4)	2.8 (3.9)
<b>medián</b>	2.2	2.3	2.3	2.3	2.0	2.2
<b>min-max</b>	1.3-2.8	1.3-2.9	1.3-10.7	1.3-10.7	1.3-2.8	1.2-25.0
<b>TTP</b>	N=22	N=42	N=57	N=121	N=18	N=74
<b>medián</b>	---	16.7	13.0	16.7	---	5.7
<b>min-max</b>	5.5-5.5	5.3-16.7	1.1-14.2	1.1-16.7	1.6-11.7	0.4-19.7
<b>OS od dg</b>	N=22	N=42	N=57	N=121	N=18	N=75
<b>medián</b>	---	79.2	105.8	105.8	68.2	49.2
<b>min-max</b>	19.8-34.3	2.5-98.5	1.2-181.9	1.2-181.9	3.9-68.2	0.5-149.6
<b>OS od zah. terapie</b>	N=22	N=42	N=57	N=121	N=18	N=75
<b>medián</b>	---	18.6	---	18.6	---	7.9
<b>min-max</b>	6.9-11.4	2.0-18.6	1.1-16.8	1.1-18.6	1.6-12.2	0.4-19.7

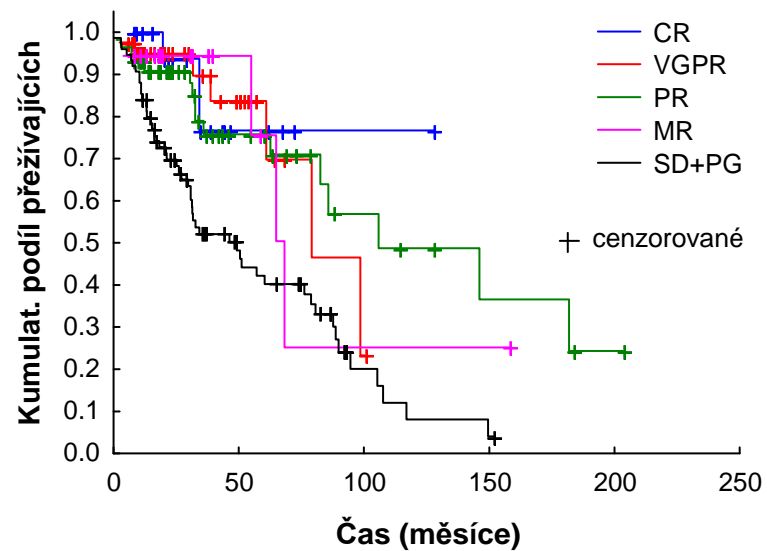
# Základní analýza

## TTP

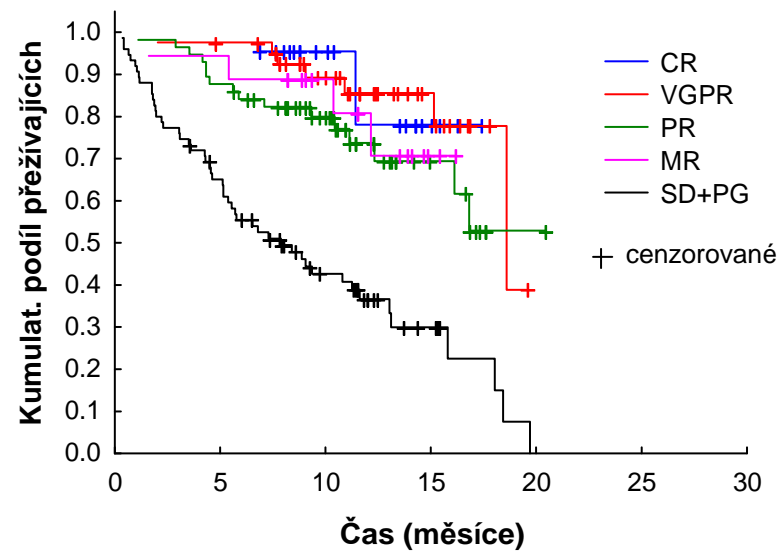


# Základní analýza

## OS od diagnózy



## OS od zahájení aktuální léčby



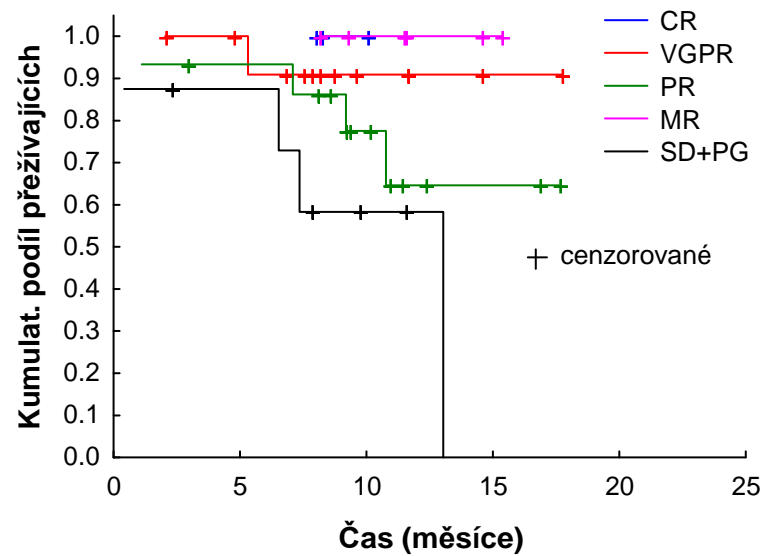
# Pacienti v 1. linii bez následné transplantace (N=45)



	<b>CR</b>	<b>VGPR</b>	<b>PR</b>	<b>ORR</b>	<b>MR</b>	<b>SD+PG</b>
<b>Pacienti</b>	N=3	N=13	N=15	N=31	N=6	N=8
<b>Počet cyklů</b>	N=3	N=13	N=14	N=30	N=5	N=8
<b>průměr (SD)</b>	6.3 (2.1)	5.2 (2.2)	5.2 (2.3)	5.3 (2.2)	5.4 (1.3)	3.3 (1.8)
<b>medián</b>	7.0	5.0	4.5	5.0	6.0	3.5
<b>min-max</b>	4.0-8.0	2.0-8.0	2.0-8.0	2.0-8.0	4.0-7.0	1.0-6.0
<b>Průměrná dávka</b>	N=3	N=12	N=14	N=29	N=4	N=8
<b>průměr (SD)</b>	2.2 (0.2)	2.2 (0.4)	2.2 (0.4)	2.2 (0.4)	2.5 (0.1)	2.4 (0.1)
<b>medián</b>	2.2	2.3	2.3	2.3	2.5	2.4
<b>min-max</b>	2.0-2.4	1.3-2.7	1.3-3.0	1.3-3.0	2.3-2.6	2.3-2.6
<b>TTP</b>	N=3	N=13	N=15	N=31	N=6	N=8
<b>medián</b>	---	---	---	---	---	13.0
<b>min-max</b>		5.3-5.3	1.1-10.8	1.1-10.8		0.4-13.0
<b>OS od dg</b>	N=3	N=13	N=15	N=31	N=6	N=8
<b>medián</b>	---	---	---	---	---	8.9
<b>min-max</b>		2.5-8.4	1.2-12.4	1.2-12.4	0.0-0.0	0.5-13.1
<b>OS od zah. terapie</b>	N=3	N=13	N=15	N=31	N=6	N=8
<b>medián</b>	---	---	---	---	---	8.9
<b>min-max</b>		2.0-7.7	1.1-12.3	1.1-12.3	0.0-0.0	0.4-13.0

# Pacienti v 1. linii bez následné transplantace (N=45)

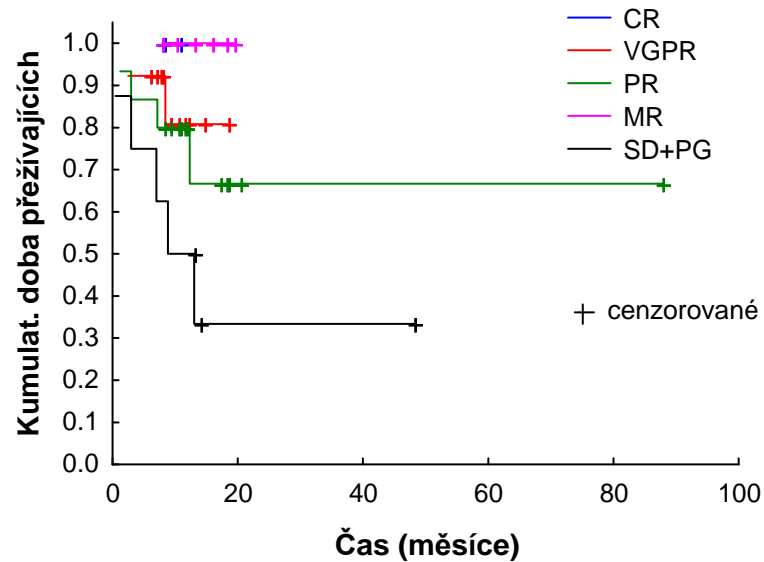
## TTP



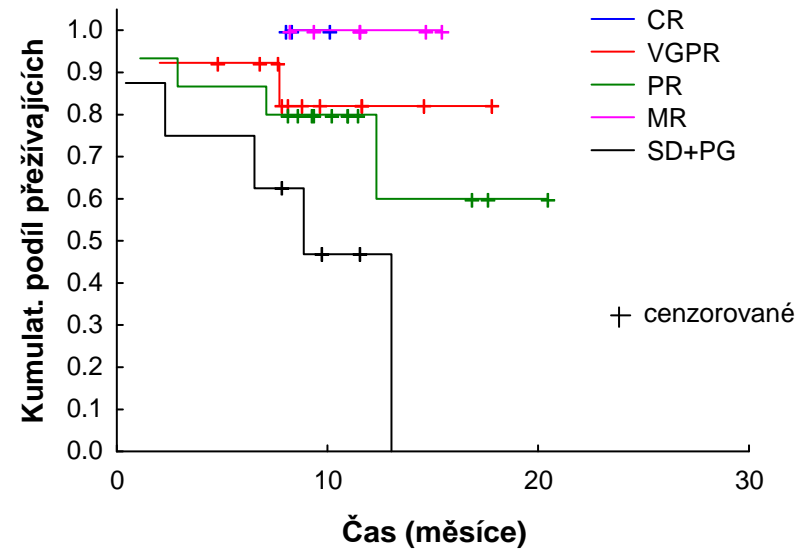
# Pacienti v 1. linii bez následné transplantace (N=45)



## OS od diagnózy



## OS od zahájení aktuální léčby



# Pacienti v 1. relapsu (N=94)

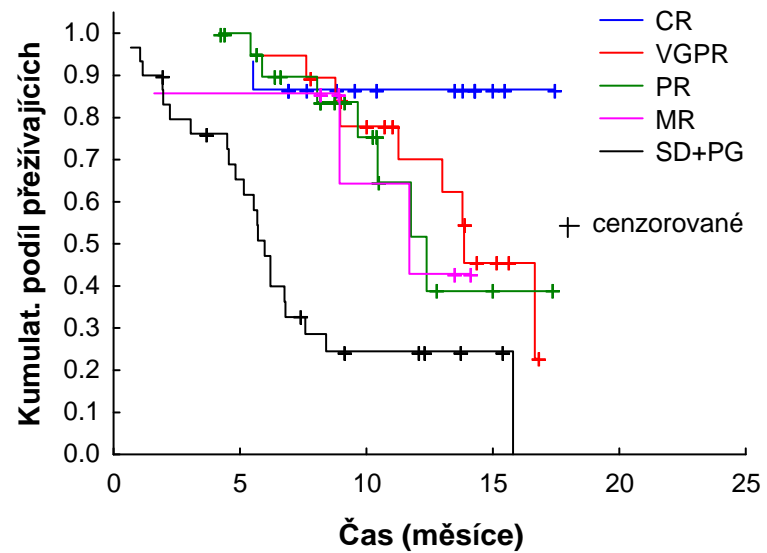


	<b>CR</b>	<b>VGPR</b>	<b>PR</b>	<b>ORR</b>	<b>MR</b>	<b>SD+PG</b>
<b>Pacienti</b>	N=15	N=19	N=22	N=56	N=7	N=31
<b>Počet cyklů</b>	N=15	N=18	N=22	N=55	N=7	N=29
<b>průměr (SD)</b>	6.5 (1.8)	5.3 (2.3)	5.6 (1.9)	5.8 (2.0)	4.3 (2.1)	4.2 (2.9)
<b>medián</b>	7.0	5.0	5.0	5.0	5.0	4.0
<b>min-max</b>	4.0-9.0	2.3-8.0	3.0-8.0	2.3-9.0	1.0-7.0	1.0-13.0
<b>Průměrná dávka</b>	N=15	N=18	N=22	N=55	N=7	N=29
<b>průměr (SD)</b>	2.0 (0.5)	2.3 (0.4)	2.3 (0.5)	2.2 (0.5)	2.1 (0.4)	2.2 (0.5)
<b>medián</b>	2.2	2.3	2.4	2.3	2.0	2.2
<b>min-max</b>	1.3-2.8	1.3-2.9	1.3-3.0	1.3-3.0	1.3-2.8	1.3-3.2
<b>TTP</b>	N=15	N=19	N=22	N=56	N=7	N=30
<b>medián</b>	---	13.9	12.4	16.7	11.7	6.0
<b>min-max</b>	5.5-5.5	5.5-16.7	5.4-12.4	5.4-16.7	1.6-11.7	0.7-15.8
<b>OS od dg</b>	N=15	N=19	N=22	N=56	N=7	N=31
<b>medián</b>	---	79.2	---	79.2	---	30.8
<b>min-max</b>	19.8-34.3	31.7-79.2	7.3-36.0	7.3-79.2	3.9-3.9	3.3-89.9
<b>OS od zah. terapie</b>	N=15	N=19	N=22	N=56	N=7	N=31
<b>medián</b>	---	18.6	---	18.6	---	8.4
<b>min-max</b>	6.9-11.4	9.1-18.6	4.2-16.1	4.2-18.6	1.6-1.6	1.1-18.0



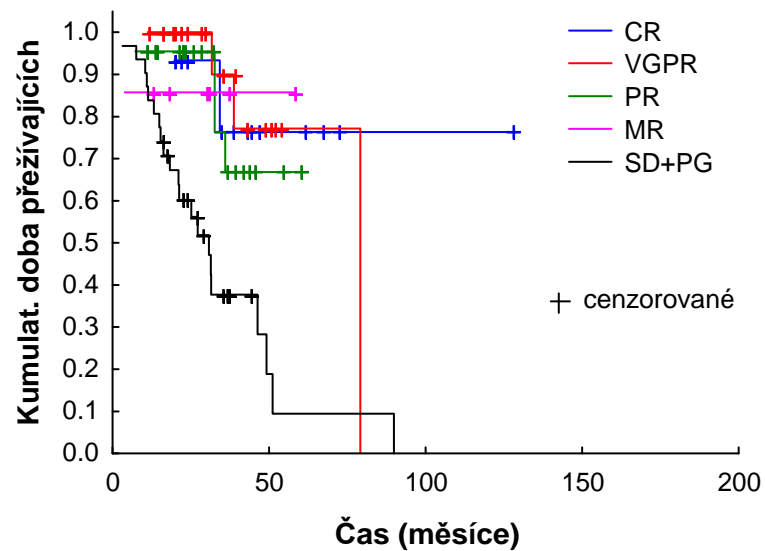
# Pacienti v 1. relapsu (N=94)

## TTP

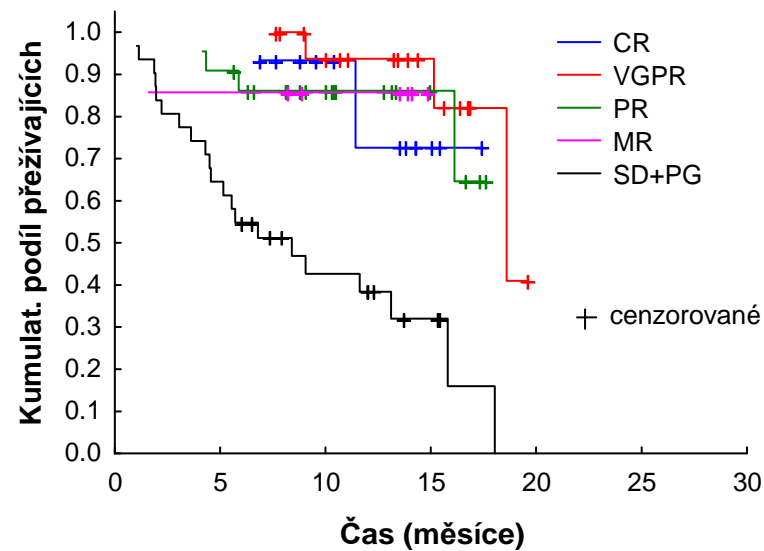


# Pacienti v 1. relapsu (N=94)

## OS od diagnózy



## OS od zahájení aktuální léčby



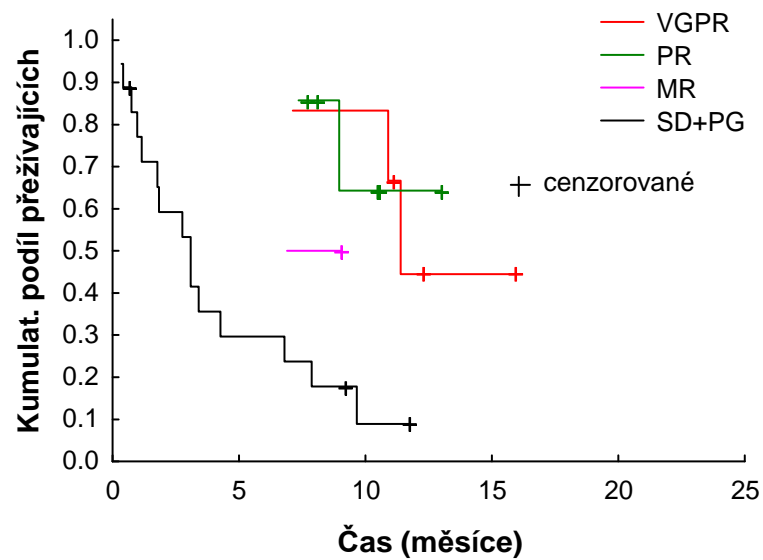
# Pacienti v 2. relapsu (N=33)



	<b>CR</b>	<b>VGPR</b>	<b>PR</b>	<b>ORR</b>	<b>MR</b>	<b>SD+PG</b>
<b>Pacienti</b>	N=0	N=6	N=7	N=13	N=2	N=18
<b>Počet cyklů</b>		N=6	N=7	N=13	N=2	N=16
<b>průměr (SD)</b>		7.5 (3.1)	5.0 (2.9)	6.2 (3.2)	7.0 (0.0)	2.9 (1.9)
<b>medián</b>		7.5	6.0	7.0	7.0	2.5
<b>min-max</b>		4.0-13.0	1.0-8.0	1.0-13.0	7.0-7.0	1.0-8.0
<b>Průměrná dávka</b>		N=6	N=7	N=13	N=2	N=15
<b>průměr (SD)</b>		2.2 (0.4)	1.9 (0.4)	2.0 (0.4)	1.9 (0.2)	5.3 (8.0)
<b>medián</b>		2.1	2.0	2.1	1.9	2.5
<b>min-max</b>		1.7-2.7	1.3-2.3	1.3-2.7	1.7-2.0	1.3-25.0
<b>TTP</b>		N=6	N=7	N=13	N=2	N=18
<b>medián</b>		11.4	---	11.4	6.9	3.1
<b>min-max</b>		7.1-11.4	7.4-9.0	7.1-11.4	6.9-6.9	0.4-9.7
<b>OS od dg</b>		N=6	N=7	N=13	N=2	N=18
<b>medián</b>		98.5	105.8	98.5	68.2	34.3
<b>min-max</b>		98.5-98.5	30.6-105.8	30.6-105.8	68.2-68.2	5.4-87.8
<b>OS od zah. terapie</b>		N=6	N=7	N=13	N=2	N=18
<b>medián</b>		---	---	---	12.2	4.3
<b>min-max</b>		10.9-10.9	9.3-10.4	9.3-10.9	12.2-12.2	0.4-7.9

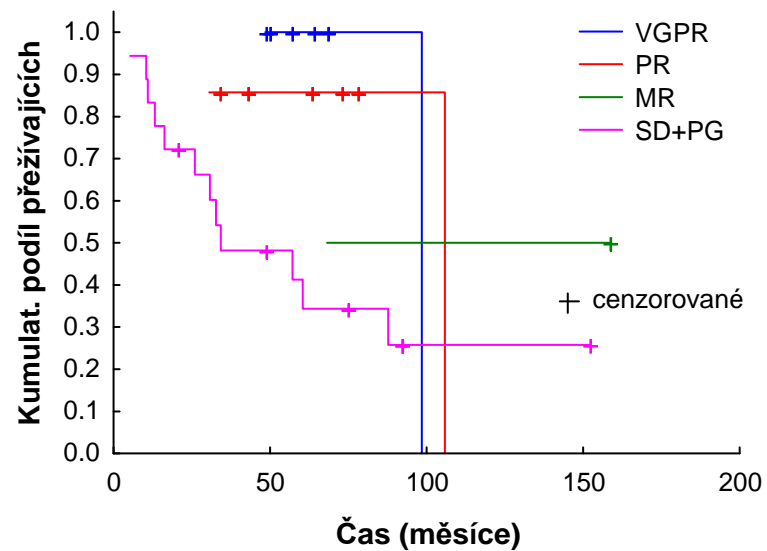
# Pacienti v 2. relapsu (N=33)

## TTP

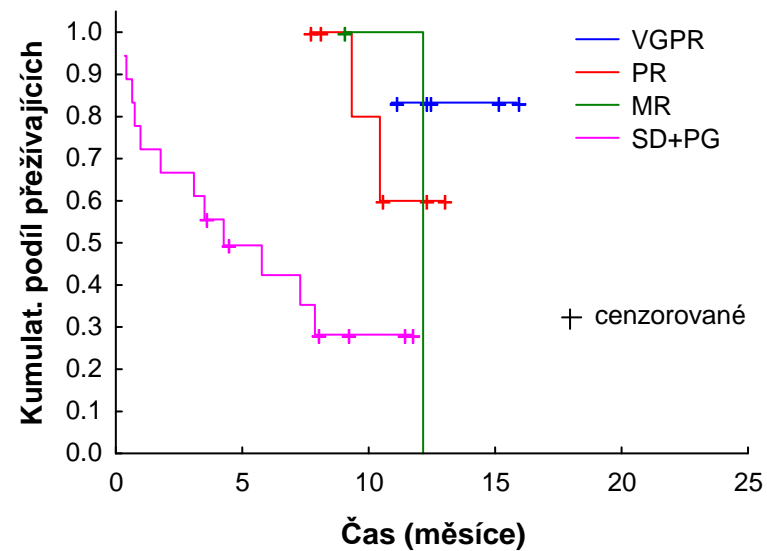


# Pacienti v 2. relapsu (N=33)

## OS od diagnózy



## OS od zahájení aktuální léčby



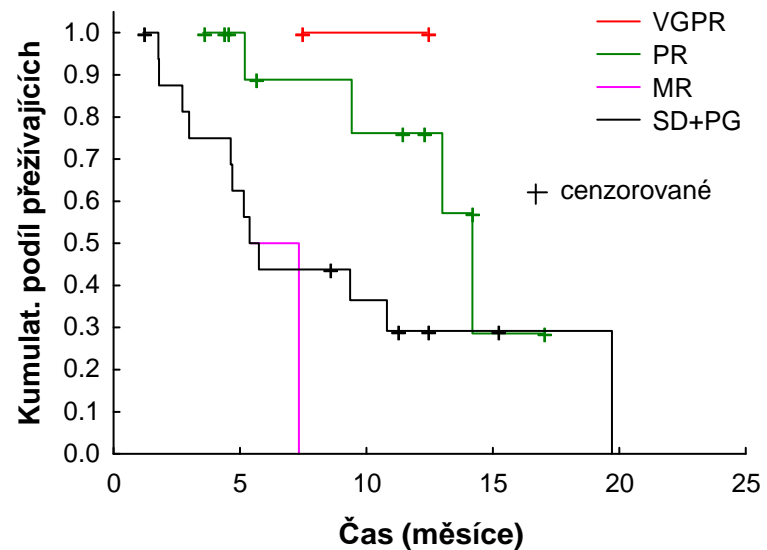
# Pacienti v 3. a vyšším relapsu (N=33)



	<b>CR</b>	<b>VGPR</b>	<b>PR</b>	<b>ORR</b>	<b>MR</b>	<b>SD+PG</b>
<b>Pacienti</b>	N=0	N=2	N=12	N=14	N=2	N=17
<b>Počet cyklů</b>		N=2	N=12	N=14	N=1	N=16
<b>průměr (SD)</b>		6.0 (2.8)	5.5 (1.9)	5.5 (1.9)	---	3.4 (2.0)
<b>medián</b>		6.0	6.0	6.0	4.0	3.0
<b>min-max</b>		4.0-8.0	2.0-8.0	2.0-8.0	4.0-4.0	0.5-8.5
<b>Průměrná dávka</b>		N=2	N=11	N=13	N=1	N=15
<b>průměr (SD)</b>		1.8 (0.7)	1.9 (0.5)	1.9 (0.5)	---	1.9 (0.5)
<b>medián</b>		1.8	2.0	2.0	1.5	1.8
<b>min-max</b>		1.3-2.3	1.3-2.6	1.3-2.6	1.5-1.5	1.2-2.6
<b>TTP</b>		N=2	N=12	N=14	N=2	N=17
<b>medián</b>		---	14.2	14.2	5.4	5.4
<b>min-max</b>			11.2-5.2	11.2-5.2	6.4-5.4	4.9-1.8
<b>OS od dg</b>		N=2	N=12	N=14	N=2	N=17
<b>medián</b>		61	146.1	146.1	55.0	94.7
<b>min-max</b>		61.0-61.0	31.5-181.9	31.5-181.9	55.0-65.0	29.8-149.6
<b>OS od zah. terapie</b>		N=2	N=12	N=14	N=2	N=17
<b>medián</b>		7.5	16.8	16.8	5.4	10.8
<b>min-max</b>		7.5-7.5	3.5-16.8	3.5-16.8	5.4-10.4	1.2-19.7

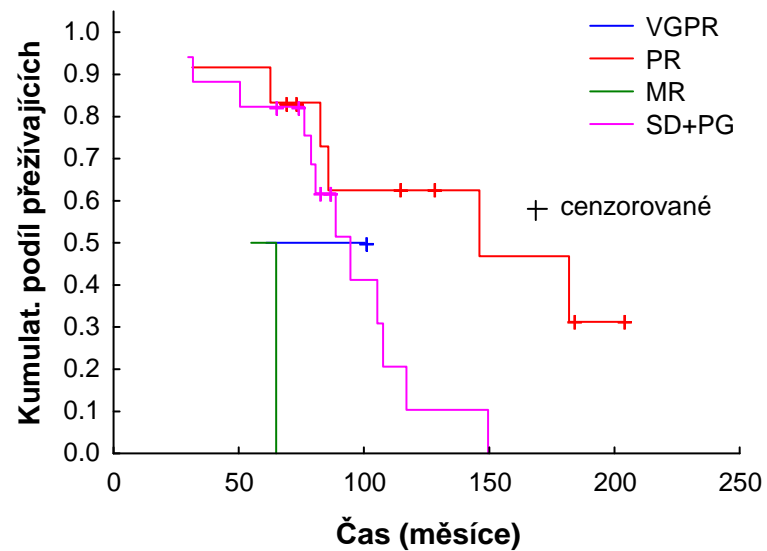
# Pacienti v 3. a vyšším relapsu (N=33)

## TTP

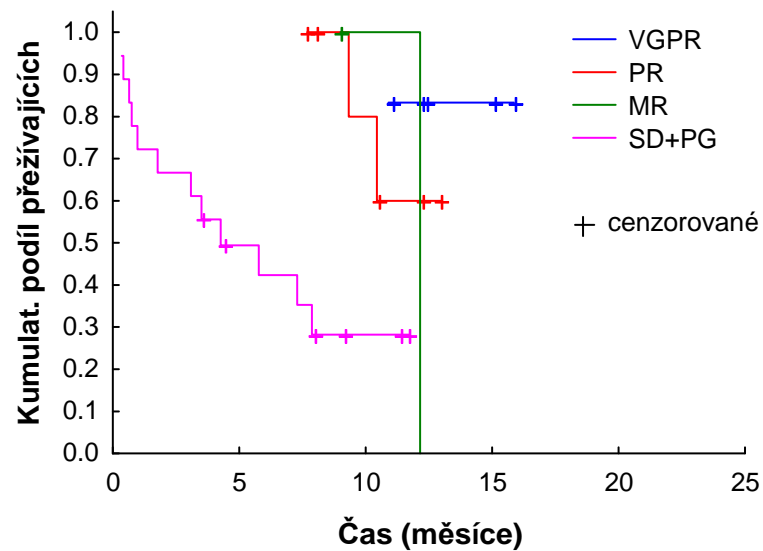


# Pacienti v 3. a vyšším relapsu (N=33)

## OS od diagnózy



## OS od zahájení aktuální léčby





Děkuji za pozornost



# Průměrná denní dávka (mg) dle linie

	<b>Celkem</b>	<b>2004</b>	<b>2005</b>	<b>2006</b>
<b>Celkem</b>				
<b>Průměrná denní dávka</b>	N=832	N=2	N=12	N=9
<b>průměr (SD)</b>	2.4 (2.4)	2.0 (0.4)	2.5 (1.8)	2.1 (0.6)
<b>medián</b>	2.3	2.0	2.0	2.1
<b>min-max</b>	0.3-29.1	1.7-2.3	1.3-8.0	1.1-3.0
<b>1.linie</b>				
<b>Průměrná denní dávka</b>	N=205	N=0	N=2	N=1
<b>průměr (SD)</b>	2.4 (2.0)		1.8 (0.0)	2.1
<b>medián</b>	2.3		1.8	2.1
<b>min-max</b>	0.3-29.1		1.8-1.9	2.1-2.1
<b>Relaps celkem</b>				
<b>Průměrná denní dávka</b>	N=627	N=2	N=10	N=8
<b>průměr (SD)</b>	2.5 (2.5)	2.0 (0.4)	2.7 (1.9)	2.1 (0.7)
<b>medián</b>	2.2	2.0	2.1	2.2
<b>min-max</b>	0.8-25.0	1.7-2.3	1.3-8.0	1.1-3.0
<b>1.relaps</b>				
<b>Průměrná denní dávka</b>	N=334	N=0	N=2	N=4
<b>průměr (SD)</b>	2.2 (0.5)		2.1 (0.2)	2.2 (0.8)
<b>medián</b>	2.3		2.1	2.3
<b>min-max</b>	0.8-3.4		2.0-2.3	1.1-3.0
<b>2.relaps</b>				
<b>Průměrná denní dávka</b>	N=168	N=1	N=4	N=2
<b>průměr (SD)</b>	3.0 (4.1)	1.7	3.4 (3.1)	2.6 (0.4)
<b>medián</b>	2.2	1.7	2.2	2.6
<b>min-max</b>	1.0-25.0	1.7-1.7	1.3-8.0	2.3-2.8
<b>3. a vyšší relaps</b>				
<b>Průměrná denní dávka</b>	N=125	N=1	N=4	N=2
<b>průměr (SD)</b>	2.4 (2.9)	2.3	2.1 (0.5)	1.6 (0.4)
<b>medián</b>	2.1	2.3	2.1	1.6
<b>min-max</b>	1.0-25.0	2.3-2.3	1.5-2.8	1.3-1.8

# Průměrná denní dávka (mg) dle linie



	2007	2008	2009	2010	2011
<b>Celkem</b>					
<b>Průměrná denní dávka</b>	N=20	N=156	N=258	N=259	N=116
<b>průměr (SD)</b>	1.9 (0.7)	2.6 (2.8)	2.6 (3.1)	2.4 (2.1)	2.1 (0.6)
<b>medián</b>	2.0	2.3	2.3	2.3	2.3
<b>min-max</b>	1.0-3.4	0.8-25.0	0.9-29.1	0.3-25.0	1.0-3.3
<b>1.linie</b>					
<b>Průměrná denní dávka</b>	N=2	N=15	N=43	N=87	N=55
<b>průměr (SD)</b>	2.0 (0.0)	2.0 (0.5)	2.9 (4.1)	2.3 (1.0)	2.3 (0.5)
<b>medián</b>	2.0	2.0	2.3	2.3	2.5
<b>min-max</b>	2.0-2.0	1.3-2.7	0.9-29.1	0.3-10.7	1.0-2.9
<b>Relaps celkem</b>					
<b>Průměrná denní dávka</b>	N=18	N=141	N=215	N=172	N=61
<b>průměr (SD)</b>	1.9 (0.7)	2.7 (2.9)	2.6 (2.8)	2.4 (2.5)	2.0 (0.6)
<b>medián</b>	2.0	2.3	2.2	2.2	2.1
<b>min-max</b>	1.0-3.4	0.8-25.0	1.1-25.0	1.2-25.0	1.0-3.3
<b>1.relaps</b>					
<b>Průměrná denní dávka</b>	N=6	N=56	N=130	N=104	N=32
<b>průměr (SD)</b>	2.2 (0.8)	2.2 (0.5)	2.2 (0.4)	2.2 (0.5)	2.1 (0.5)
<b>medián</b>	2.2	2.2	2.3	2.3	2.3
<b>min-max</b>	1.1-3.4	0.8-3.1	1.1-3.3	1.3-3.3	1.3-3.3
<b>2.relaps</b>					
<b>Průměrná denní dávka</b>	N=6	N=52	N=60	N=35	N=8
<b>průměr (SD)</b>	1.6 (0.6)	2.5 (1.8)	3.5 (5.2)	3.5 (5.4)	2.0 (0.8)
<b>medián</b>	1.5	2.3	2.2	2.3	2.0
<b>min-max</b>	1.0-2.4	1.1-15.0	1.2-25.0	1.3-25.0	1.0-2.8
<b>3. a vyšší relaps</b>					
<b>Průměrná denní dávka</b>	N=6	N=33	N=25	N=33	N=21
<b>průměr (SD)</b>	1.9 (0.7)	3.6 (5.5)	2.2 (0.8)	1.9 (0.5)	1.7 (0.4)
<b>medián</b>	1.8	2.3	2.2	1.9	1.8
<b>min-max</b>	1.1-2.7	1.0-25.0	1.3-5.2	1.2-2.6	1.3-2.3

# Průměrná denní dávka (mg) dle centra

	<b>Celkem</b>	<b>2004</b>	<b>2005</b>	<b>2006</b>
<b>Brno</b>				
<b>Průměrná denní dávka</b>	N=310	N=0	N=4	N=0
<b>průměr (SD)</b>	2.4 (1.4)		3.6 (3.0)	
<b>medián</b>	2.3		2.2	
<b>min-max</b>	0.3-24.0		2.0-8.0	
<b>Hradec Králové</b>				
<b>Průměrná denní dávka</b>	N=84	N=0	N=2	N=1
<b>průměr (SD)</b>	3.1 (3.8)		2.5 (0.4)	2.8
<b>medián</b>	2.3		2.5	2.8
<b>min-max</b>	1.4-25.0		2.2-2.8	2.8-2.8
<b>Olomouc</b>				
<b>Průměrná denní dávka</b>	N=124	N=0	N=2	N=2
<b>průměr (SD)</b>	2.2 (3.8)		1.4 (0.1)	1.2 (0.2)
<b>medián</b>	1.3		1.4	1.2
<b>min-max</b>	0.9-25.0		1.3-1.5	1.1-1.3
<b>FNKV</b>				
<b>Průměrná denní dávka</b>	N=81	N=0	N=0	N=3
<b>průměr (SD)</b>	2.3 (0.3)			2.5 (0.5)
<b>medián</b>	2.4			2.3
<b>min-max</b>	1.4-3.4			2.1-3.0
<b>VFN Praha</b>				
<b>Průměrná denní dávka</b>	N=135	N=2	N=4	N=3
<b>průměr (SD)</b>	2.5 (2.0)	2.0 (0.4)	2.0 (0.3)	2.1 (0.4)
<b>medián</b>	2.3	2.0	1.9	2.1
<b>min-max</b>	1.2-25.0	1.7-2.3	1.8-2.4	1.8-2.5
<b>Jiné</b>				
<b>Průměrná denní dávka</b>	N=98	N=0	N=0	N=0
<b>průměr (SD)</b>	2.5 (2.7)			
<b>medián</b>	2.3			
<b>min-max</b>	1.0-29.1			

# Průměrná denní dávka (mg) dle centra



	2007	2008	2009	2010	2011
<b>Brno</b>					
<b>Průměrná denní dávka</b>	N=2	N=64	N=106	N=83	N=51
<b>průměr (SD)</b>	2.2 (0.3)	2.2 (0.5)	2.5 (2.2)	2.3 (0.4)	2.4 (0.4)
<b>medián</b>	2.2	2.3	2.3	2.3	2.4
<b>min-max</b>	2.0-2.4	0.8-3.3	1.1-24.0	0.3-3.3	1.0-3.3
<b>Hradec Králové</b>					
<b>Průměrná denní dávka</b>	N=3	N=19	N=13	N=36	N=10
<b>průměr (SD)</b>	2.2 (0.4)	4.2 (5.8)	3.9 (6.4)	2.5 (1.4)	2.5 (0.3)
<b>medián</b>	2.0	2.5	2.3	2.3	2.6
<b>min-max</b>	1.9-2.6	1.6-25.0	1.4-25.0	1.6-10.7	2.0-2.8
<b>Olomouc</b>					
<b>Průměrná denní dávka</b>	N=7	N=22	N=23	N=38	N=30
<b>průměr (SD)</b>	1.2 (0.1)	3.1 (4.9)	2.2 (2.8)	2.6 (5.4)	1.4 (0.3)
<b>medián</b>	1.1	2.1	1.4	1.3	1.3
<b>min-max</b>	1.0-1.3	1.0-25.0	0.9-15.0	1.2-25.0	1.3-2.4
<b>FNKV</b>					
<b>Průměrná denní dávka</b>	N=2	N=22	N=27	N=21	N=6
<b>průměr (SD)</b>	2.5 (1.3)	2.3 (0.4)	2.4 (0.3)	2.3 (0.3)	2.4 (0.2)
<b>medián</b>	2.5	2.4	2.4	2.3	2.5
<b>min-max</b>	1.6-3.4	1.4-3.0	1.8-3.0	1.5-2.7	2.1-2.6
<b>VFN Praha</b>					
<b>Průměrná denní dávka</b>	N=6	N=25	N=49	N=41	N=5
<b>průměr (SD)</b>	2.3 (0.2)	2.3 (0.3)	2.7 (3.3)	2.4 (0.4)	2.4 (0.5)
<b>medián</b>	2.3	2.3	2.2	2.4	2.5
<b>min-max</b>	2.0-2.7	1.9-2.9	1.3-25.0	1.2-3.2	1.7-2.9
<b>Jiné</b>					
<b>Průměrná denní dávka</b>	N=0	N=4	N=40	N=40	N=14
<b>průměr (SD)</b>		2.2 (0.3)	3.0 (4.3)	2.2 (0.3)	2.2 (0.6)
<b>medián</b>		2.1	2.3	2.3	2.4
<b>min-max</b>		1.9-2.5	1.3-29.1	1.2-2.9	1.0-2.8

# Centrum



	<b>Celkem</b>	<b>2004</b>	<b>2005</b>	<b>2006</b>	<b>2007</b>	<b>2008</b>	<b>2009</b>	<b>2010</b>	<b>2011</b>
<b>Centrum</b>	N=1144	N=5	N=46	N=31	N=88	N=186	N=292	N=292	N=204
<b>FN Brno</b>	462 (40.4%)	3 (60.0%)	35 (76.1%)	18 (58.1%)	61 (69.3%)	78 (41.9%)	111 (38.0%)	87 (29.8%)	69 (33.8%)
<b>VFN Praha</b>	170 (14.9%)	2 (40.0%)	4 (8.7%)	3 (9.7%)	7 (8.0%)	32 (17.2%)	51 (17.5%)	49 (16.8%)	22 (10.8%)
<b>FN Olomouc</b>	152 (13.3%)	0 (0.0%)	2 (4.3%)	3 (9.7%)	7 (8.0%)	25 (13.4%)	33 (11.3%)	41 (14.0%)	41 (20.1%)
<b>FNKV Praha</b>	122 (10.7%)	0 (0.0%)	3 (6.5%)	4 (12.9%)	6 (6.8%)	22 (11.8%)	34 (11.6%)	30 (10.3%)	23 (11.3%)
<b>FNHK</b>	116 (10.1%)	0 (0.0%)	2 (4.3%)	3 (9.7%)	7 (8.0%)	25 (13.4%)	22 (7.5%)	40 (13.7%)	17 (8.3%)
<b>KN Liberec</b>	36 (3.1%)	0 (0.0%)	0 (0.0%)	0 (0.0%)	0 (0.0%)	3 (1.6%)	10 (3.4%)	7 (2.4%)	16 (7.8%)
<b>Havířov</b>	24 (2.1%)	0 (0.0%)	0 (0.0%)	0 (0.0%)	0 (0.0%)	0 (0.0%)	13 (4.5%)	8 (2.7%)	3 (1.5%)
<b>FN Ostrava</b>	22 (1.9%)	0 (0.0%)	0 (0.0%)	0 (0.0%)	0 (0.0%)	0 (0.0%)	5 (1.7%)	12 (4.1%)	5 (2.5%)
<b>Nový Jičín</b>	11 (1.0%)	0 (0.0%)	0 (0.0%)	0 (0.0%)	0 (0.0%)	0 (0.0%)	6 (2.1%)	3 (1.0%)	2 (1.0%)
<b>Opava</b>	10 (0.9%)	0 (0.0%)	0 (0.0%)	0 (0.0%)	0 (0.0%)	1 (0.5%)	3 (1.0%)	4 (1.4%)	2 (1.0%)
<b>Mladá Boleslav</b>	8 (0.7%)	0 (0.0%)	0 (0.0%)	0 (0.0%)	0 (0.0%)	0 (0.0%)	2 (0.7%)	5 (1.7%)	1 (0.5%)
<b>Pelhřimov</b>	8 (0.7%)	0 (0.0%)	0 (0.0%)	0 (0.0%)	0 (0.0%)	0 (0.0%)	2 (0.7%)	4 (1.4%)	2 (1.0%)
<b>České Budějovice</b>	3 (0.3%)	0 (0.0%)	0 (0.0%)	0 (0.0%)	0 (0.0%)	0 (0.0%)	0 (0.0%)	2 (0.7%)	1 (0.5%)



# ISS 1 (N=62)

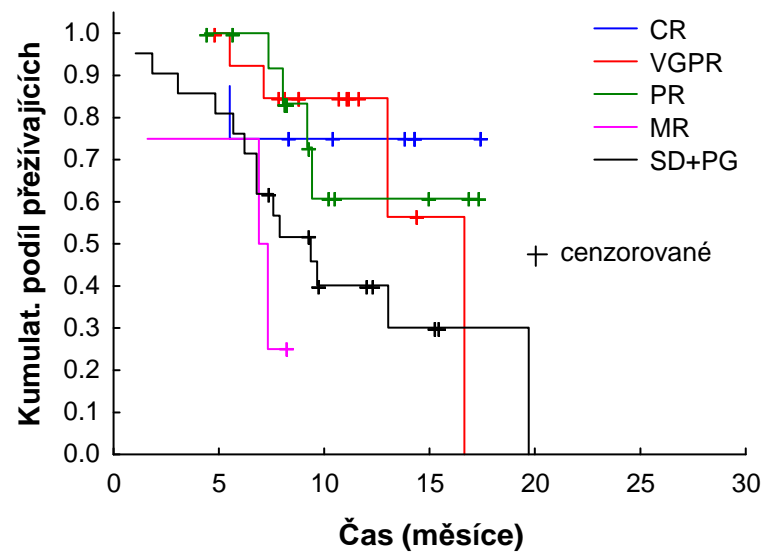


	<b>CR</b>	<b>VGPR</b>	<b>PR</b>	<b>ORR</b>	<b>MR</b>	<b>SD+PG</b>
<b>Pacienti</b>	N=8	N=14	N=14	N=36	N=4	N=22
<b>Počet cyklů</b>	N=8	N=14	N=14	N=36	N=4	N=22
<b>průměr (SD)</b>	6.8 (1.9)	4.8 (1.3)	6.6 (1.6)	5.9 (1.8)	4.8 (2.9)	4.9 (2.8)
<b>medián</b>	7.5	5.0	7.0	6.0	5.5	4.1
<b>min-max</b>	4.0-9.0	2.5-8.0	4.0-8.0	2.5-9.0	1.0-7.0	1.0-13.0
<b>Průměrná dávka</b>	N=8	N=14	N=14	N=36	N=4	N=22
<b>průměr (SD)</b>	1.9 (0.5)	2.3 (0.5)	2.2 (0.4)	2.2 (0.5)	1.9 (0.3)	2.2 (0.5)
<b>medián</b>	2.1	2.4	2.3	2.3	1.9	2.2
<b>min-max</b>	1.3-2.8	1.3-2.9	1.3-2.7	1.3-2.9	1.5-2.3	1.3-3.2
<b>TTP</b>	N=8	N=14	N=14	N=36	N=4	N=21
<b>medián</b>	---	16.7	---	16.7	6.9	9.4
<b>min-max</b>	5.5-5.5	5.5-16.7	7.4-9.4	5.5-16.7	1.6-7.3	1.1-19.7
<b>OS od dg</b>	N=8	N=14	N=14	N=36	N=4	N=22
<b>medián</b>	---	---	105.8	105.8	55.0	94.7
<b>min-max</b>	34.3-34.3		32.6-105.8	32.6-105.8	3.9-68.2	7.6-105.3
<b>OS od zah. terapie</b>	N=8	N=14	N=14	N=36	N=4	N=22
<b>medián</b>	---	---	---	---	10.4	13.0
<b>min-max</b>	11.4-11.4		4.3-9.3	4.3-11.4	1.6-12.2	1.1-19.7



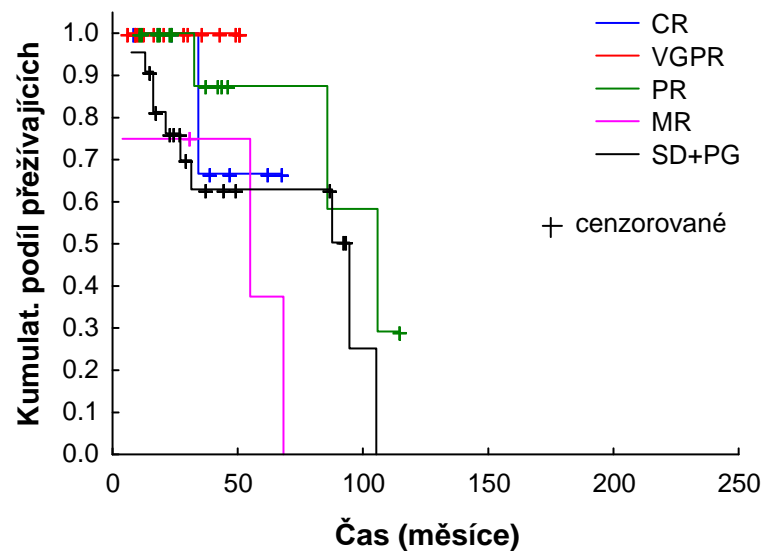
# ISS 1 (N=62)

## TTP

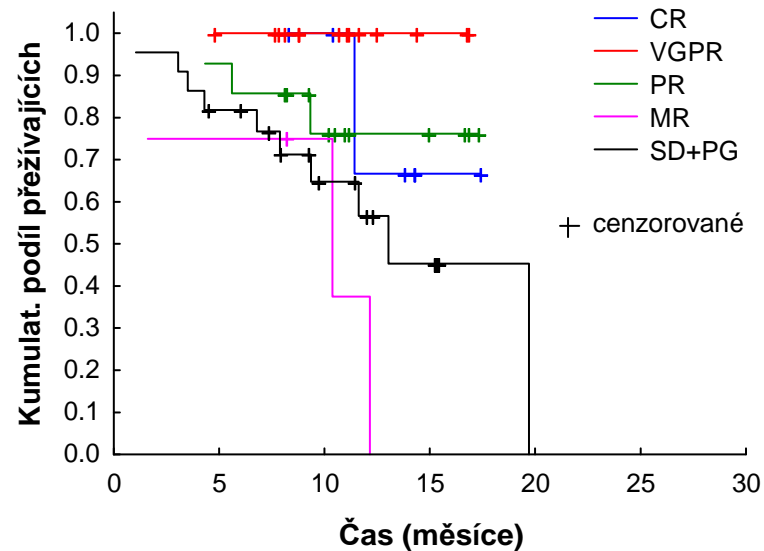


# ISS 1 (N=62)

## OS od diagnózy



## OS od zahájení aktuální léčby



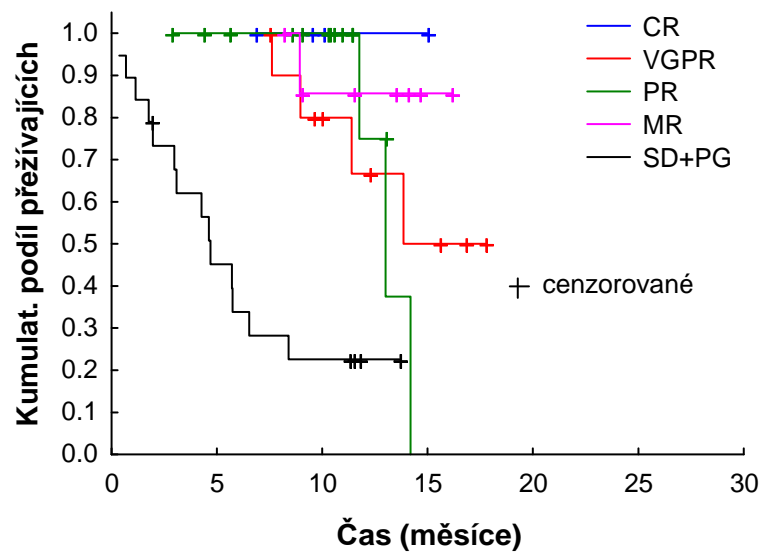
# ISS 2 (N=57)



	<b>CR</b>	<b>VGPR</b>	<b>PR</b>	<b>ORR</b>	<b>MR</b>	<b>SD+PG</b>
<b>Pacienti</b>	N=4	N=11	N=15	N=30	N=8	N=19
<b>Počet cyklů</b>	N=4	N=11	N=15	N=30	N=8	N=19
<b>průměr (SD)</b>	5.5 (1.7)	5.9 (2.6)	5.5 (2.4)	5.6 (2.3)	4.8 (1.6)	3.6 (2.1)
<b>medián</b>	5.0	8.0	6.0	5.8	4.5	4.0
<b>min-max</b>	4.0-8.0	2.0-8.0	1.0-8.0	1.0-8.0	2.0-7.0	1.0-8.5
<b>Průměrná dávka</b>	N=4	N=10	N=15	N=29	N=7	N=18
<b>průměr (SD)</b>	2.4 (0.1)	2.2 (0.4)	2.3 (0.3)	2.3 (0.3)	2.3 (0.3)	3.4 (5.4)
<b>medián</b>	2.4	2.4	2.3	2.3	2.3	2.4
<b>min-max</b>	2.3-2.4	1.3-2.7	1.3-2.7	1.3-2.7	2.0-2.8	1.3-25.0
<b>TTP</b>	N=4	N=11	N=15	N=30	N=8	N=19
<b>medián</b>	---	13.9	13.0	14.2	---	4.7
<b>min-max</b>		7.6-13.9	11.8-14.2	7.6-14.2	8.9-8.9	0.4-8.4
<b>OS od dg</b>	N=4	N=11	N=15	N=30	N=8	N=19
<b>medián</b>	---	61	181.9	181.9	---	76.2
<b>min-max</b>	19.8-19.8	31.7-61.0	3.0-181.9	3.0-181.9		5.4-117.0
<b>OS od zah. terapie</b>	N=4	N=11	N=15	N=30	N=8	N=19
<b>medián</b>	---	18.6	16.8	18.6	---	8.4
<b>min-max</b>	6.9-6.9	7.5-18.6	2.9-16.8	2.9-18.6		0.4-18.4

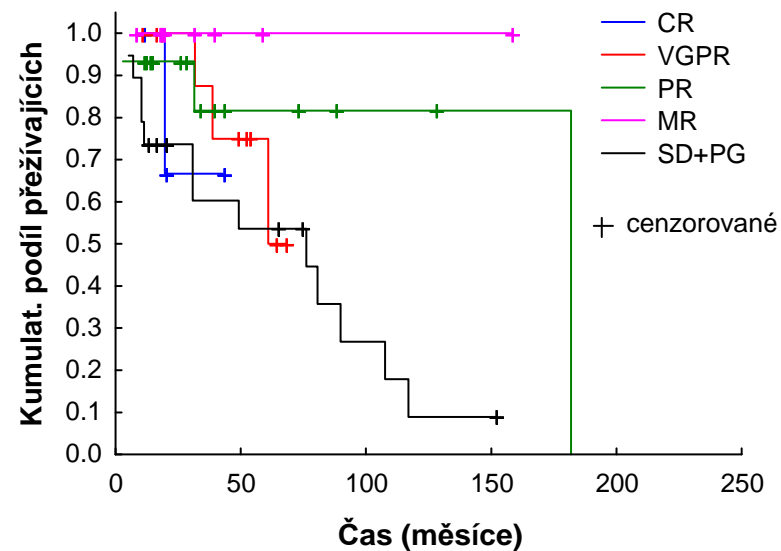
# ISS 2 (N=57)

## TTP

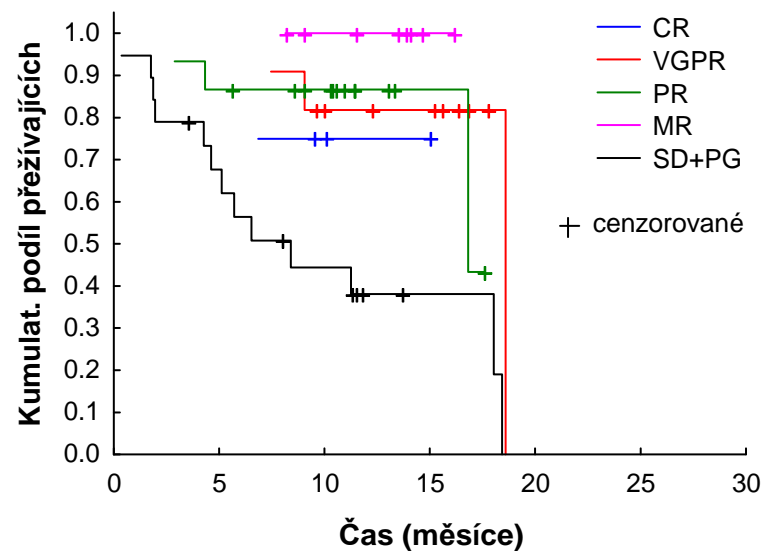


# ISS 2 (N=57)

## OS od diagnózy



## OS od zahájení aktuální léčby



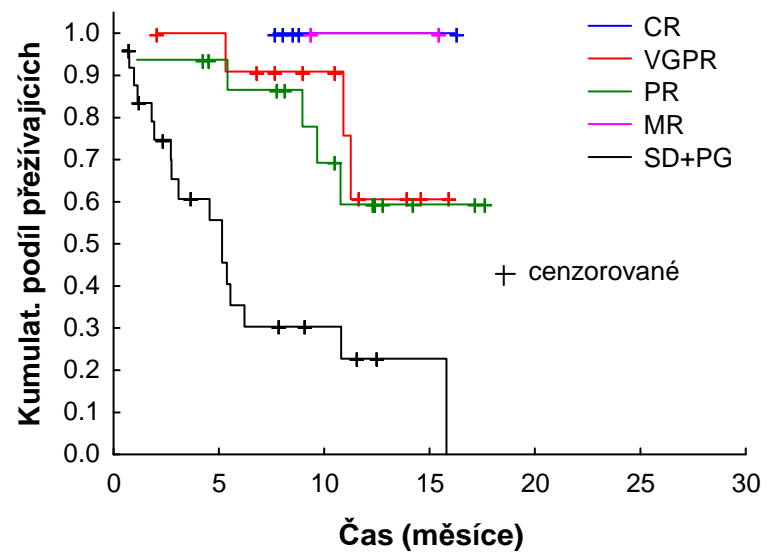
# ISS 3 (N=60)



	<b>CR</b>	<b>VGPR</b>	<b>PR</b>	<b>ORR</b>	<b>MR</b>	<b>SD+PG</b>
<b>Pacienti</b>	N=5	N=12	N=16	N=33	N=2	N=25
<b>Počet cyklů</b>	N=5	N=12	N=16	N=33	N=2	N=24
<b>průměr (SD)</b>	6.8 (1.8)	6.3 (3.0)	5.0 (2.0)	5.8 (2.5)	5.5 (2.1)	2.4 (1.6)
<b>medián</b>	8.0	6.5	5.0	6.0	5.5	2.0
<b>min-max</b>	4.0-8.0	2.3-13.0	2.0-8.0	2.0-13.0	4.0-7.0	0.5-6.0
<b>Průměrná dávka</b>	N=5	N=12	N=15	N=32	N=2	N=23
<b>průměr (SD)</b>	1.9 (0.4)	2.2 (0.4)	1.9 (0.6)	2.0 (0.5)	2.5 (0.1)	2.2 (0.4)
<b>medián</b>	2.0	2.2	1.8	2.1	2.5	2.2
<b>min-max</b>	1.3-2.3	1.3-2.8	1.3-3.0	1.3-3.0	2.5-2.6	1.2-3.0
<b>TTP</b>	N=5	N=12	N=16	N=33	N=2	N=25
<b>medián</b>	---	---	---	---	---	5.2
<b>min-max</b>		5.3-11.3	1.1-10.8	1.1-11.3		0.4-15.8
<b>OS od dg</b>	N=5	N=12	N=16	N=33	N=2	N=25
<b>medián</b>	---	98.5	146.1	146.1	---	32.8
<b>min-max</b>		2.5-98.5	1.2-146.1	1.2-146.1		0.5-149.6
<b>OS od zah. terapie</b>	N=5	N=12	N=16	N=33	N=2	N=25
<b>medián</b>	---	---	---	---	---	5.2
<b>min-max</b>		2.0-10.9	1.1-12.3	1.1-12.3		0.4-15.8

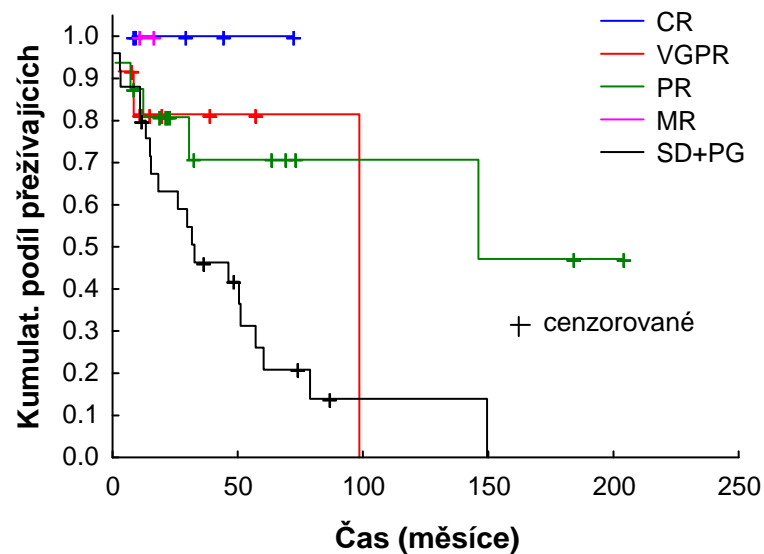
# ISS 3 (N=60)

## TTP

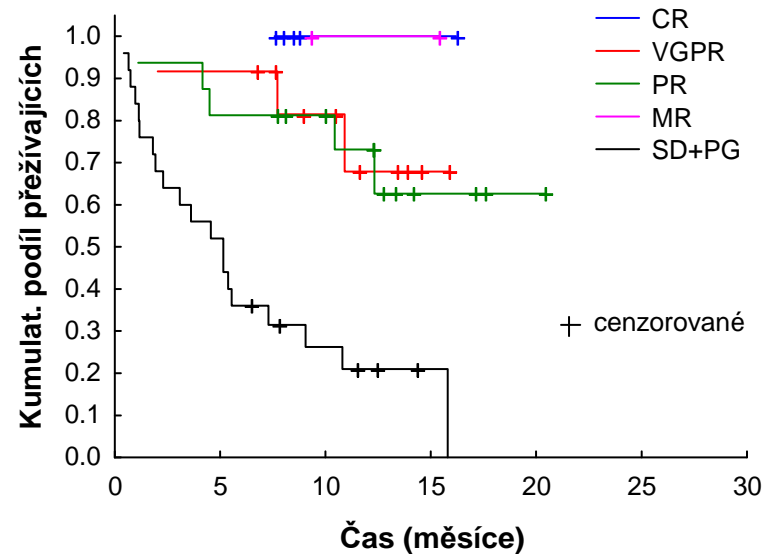


# ISS 3 (N=60)

## OS od diagnózy



## OS od zahájení aktuální léčby





# Průměrná denní dávka (mg) dle centra

	<b>Celkem</b>	<b>2004</b>	<b>2005</b>	<b>2006</b>
<b>Brno</b>				
<b>Průměrná denní dávka</b>	N=310	N=0	N=4	N=0
<b>průměr (SD)</b>	2.4 (1.4)		3.6 (3.0)	
<b>medián</b>	2.3		2.2	
<b>min-max</b>	0.3-24.0		2.0-8.0	
<b>Hradec Králové</b>				
<b>Průměrná denní dávka</b>	N=84	N=0	N=2	N=1
<b>průměr (SD)</b>	3.1 (3.8)		2.5 (0.4)	2.8
<b>medián</b>	2.3		2.5	2.8
<b>min-max</b>	1.4-25.0		2.2-2.8	2.8-2.8
<b>Olomouc</b>				
<b>Průměrná denní dávka</b>	N=124	N=0	N=2	N=2
<b>průměr (SD)</b>	2.2 (3.8)		1.4 (0.1)	1.2 (0.2)
<b>medián</b>	1.3		1.4	1.2
<b>min-max</b>	0.9-25.0		1.3-1.5	1.1-1.3
<b>FNKV</b>				
<b>Průměrná denní dávka</b>	N=81	N=0	N=0	N=3
<b>průměr (SD)</b>	2.3 (0.3)			2.5 (0.5)
<b>medián</b>	2.4			2.3
<b>min-max</b>	1.4-3.4			2.1-3.0
<b>VFN Praha</b>				
<b>Průměrná denní dávka</b>	N=135	N=2	N=4	N=3
<b>průměr (SD)</b>	2.5 (2.0)	2.0 (0.4)	2.0 (0.3)	2.1 (0.4)
<b>medián</b>	2.3	2.0	1.9	2.1
<b>min-max</b>	1.2-25.0	1.7-2.3	1.8-2.4	1.8-2.5
<b>Jiné</b>				
<b>Průměrná denní dávka</b>	N=98	N=0	N=0	N=0
<b>průměr (SD)</b>	2.5 (2.7)			
<b>medián</b>	2.3			
<b>min-max</b>	1.0-29.1			

# Průměrná denní dávka (mg) dle centra



	2007	2008	2009	2010	2011
<b>Brno</b>					
<b>Průměrná denní dávka</b>	N=2	N=64	N=106	N=83	N=51
<b>průměr (SD)</b>	2.2 (0.3)	2.2 (0.5)	2.5 (2.2)	2.3 (0.4)	2.4 (0.4)
<b>medián</b>	2.2	2.3	2.3	2.3	2.4
<b>min-max</b>	2.0-2.4	0.8-3.3	1.1-24.0	0.3-3.3	1.0-3.3
<b>Hradec Králové</b>					
<b>Průměrná denní dávka</b>	N=3	N=19	N=13	N=36	N=10
<b>průměr (SD)</b>	2.2 (0.4)	4.2 (5.8)	3.9 (6.4)	2.5 (1.4)	2.5 (0.3)
<b>medián</b>	2.0	2.5	2.3	2.3	2.6
<b>min-max</b>	1.9-2.6	1.6-25.0	1.4-25.0	1.6-10.7	2.0-2.8
<b>Olomouc</b>					
<b>Průměrná denní dávka</b>	N=7	N=22	N=23	N=38	N=30
<b>průměr (SD)</b>	1.2 (0.1)	3.1 (4.9)	2.2 (2.8)	2.6 (5.4)	1.4 (0.3)
<b>medián</b>	1.1	2.1	1.4	1.3	1.3
<b>min-max</b>	1.0-1.3	1.0-25.0	0.9-15.0	1.2-25.0	1.3-2.4
<b>FNKV</b>					
<b>Průměrná denní dávka</b>	N=2	N=22	N=27	N=21	N=6
<b>průměr (SD)</b>	2.5 (1.3)	2.3 (0.4)	2.4 (0.3)	2.3 (0.3)	2.4 (0.2)
<b>medián</b>	2.5	2.4	2.4	2.3	2.5
<b>min-max</b>	1.6-3.4	1.4-3.0	1.8-3.0	1.5-2.7	2.1-2.6
<b>VFN Praha</b>					
<b>Průměrná denní dávka</b>	N=6	N=25	N=49	N=41	N=5
<b>průměr (SD)</b>	2.3 (0.2)	2.3 (0.3)	2.7 (3.3)	2.4 (0.4)	2.4 (0.5)
<b>medián</b>	2.3	2.3	2.2	2.4	2.5
<b>min-max</b>	2.0-2.7	1.9-2.9	1.3-25.0	1.2-3.2	1.7-2.9
<b>Jiné</b>					
<b>Průměrná denní dávka</b>	N=0	N=4	N=40	N=40	N=14
<b>průměr (SD)</b>		2.2 (0.3)	3.0 (4.3)	2.2 (0.3)	2.2 (0.6)
<b>medián</b>		2.1	2.3	2.3	2.4
<b>min-max</b>		1.9-2.5	1.3-29.1	1.2-2.9	1.0-2.8

# Centrum



	<b>Celkem</b>	<b>2004</b>	<b>2005</b>	<b>2006</b>	<b>2007</b>	<b>2008</b>	<b>2009</b>	<b>2010</b>	<b>2011</b>
<b>Centrum</b>	N=1144	N=5	N=46	N=31	N=88	N=186	N=292	N=292	N=204
<b>FN Brno</b>	462 (40.4%)	3 (60.0%)	35 (76.1%)	18 (58.1%)	61 (69.3%)	78 (41.9%)	111 (38.0%)	87 (29.8%)	69 (33.8%)
<b>VFN Praha</b>	170 (14.9%)	2 (40.0%)	4 (8.7%)	3 (9.7%)	7 (8.0%)	32 (17.2%)	51 (17.5%)	49 (16.8%)	22 (10.8%)
<b>FN Olomouc</b>	152 (13.3%)	0 (0.0%)	2 (4.3%)	3 (9.7%)	7 (8.0%)	25 (13.4%)	33 (11.3%)	41 (14.0%)	41 (20.1%)
<b>FNKV Praha</b>	122 (10.7%)	0 (0.0%)	3 (6.5%)	4 (12.9%)	6 (6.8%)	22 (11.8%)	34 (11.6%)	30 (10.3%)	23 (11.3%)
<b>FNHK</b>	116 (10.1%)	0 (0.0%)	2 (4.3%)	3 (9.7%)	7 (8.0%)	25 (13.4%)	22 (7.5%)	40 (13.7%)	17 (8.3%)
<b>KN Liberec</b>	36 (3.1%)	0 (0.0%)	0 (0.0%)	0 (0.0%)	0 (0.0%)	3 (1.6%)	10 (3.4%)	7 (2.4%)	16 (7.8%)
<b>Havířov</b>	24 (2.1%)	0 (0.0%)	0 (0.0%)	0 (0.0%)	0 (0.0%)	0 (0.0%)	13 (4.5%)	8 (2.7%)	3 (1.5%)
<b>FN Ostrava</b>	22 (1.9%)	0 (0.0%)	0 (0.0%)	0 (0.0%)	0 (0.0%)	0 (0.0%)	5 (1.7%)	12 (4.1%)	5 (2.5%)
<b>Nový Jičín</b>	11 (1.0%)	0 (0.0%)	0 (0.0%)	0 (0.0%)	0 (0.0%)	0 (0.0%)	6 (2.1%)	3 (1.0%)	2 (1.0%)
<b>Opava</b>	10 (0.9%)	0 (0.0%)	0 (0.0%)	0 (0.0%)	0 (0.0%)	1 (0.5%)	3 (1.0%)	4 (1.4%)	2 (1.0%)
<b>Mladá Boleslav</b>	8 (0.7%)	0 (0.0%)	0 (0.0%)	0 (0.0%)	0 (0.0%)	0 (0.0%)	2 (0.7%)	5 (1.7%)	1 (0.5%)
<b>Pelhřimov</b>	8 (0.7%)	0 (0.0%)	0 (0.0%)	0 (0.0%)	0 (0.0%)	0 (0.0%)	2 (0.7%)	4 (1.4%)	2 (1.0%)
<b>České Budějovice</b>	3 (0.3%)	0 (0.0%)	0 (0.0%)	0 (0.0%)	0 (0.0%)	0 (0.0%)	0 (0.0%)	2 (0.7%)	1 (0.5%)